

**Online supplement to:**

**Predictors of oxidative stress and vascular function in an experimental study of tobacco versus electronic cigarettes: A post hoc analysis of the SUR-VAPES 1 Study**

**Table 1S.** Association between baseline and post-exposure changes in oxidative and vascular features after smoking a combustion cigarette and an electronic cigarette

<b>Variable</b>	<b>R (95% confidence interval)</b>	<b>p</b>
Soluble NOX2-derived peptide	0.333 (0.024; 0.584)	0.036
Nitric oxide production	0.643 (0.414; 0.800)	<0.001
8-iso-prostaglandin F2a	0.168 (-0.162; 0.447)	0.330
Vitamin E	0.462 (0.175; 0.676)	0.003
Flow-mediated dilation	0.309 (-0.003;0.566)	0.053

Figure 1S. Association between baseline and post-exposure changes in soluble NOX2-derived peptide after smoking a combustion cigarette and an electronic cigarette ( $p=0.036$ ). Positive values indicate increased oxidative stress. Red dots indicate smokers, blue triangles indicate non-smokers

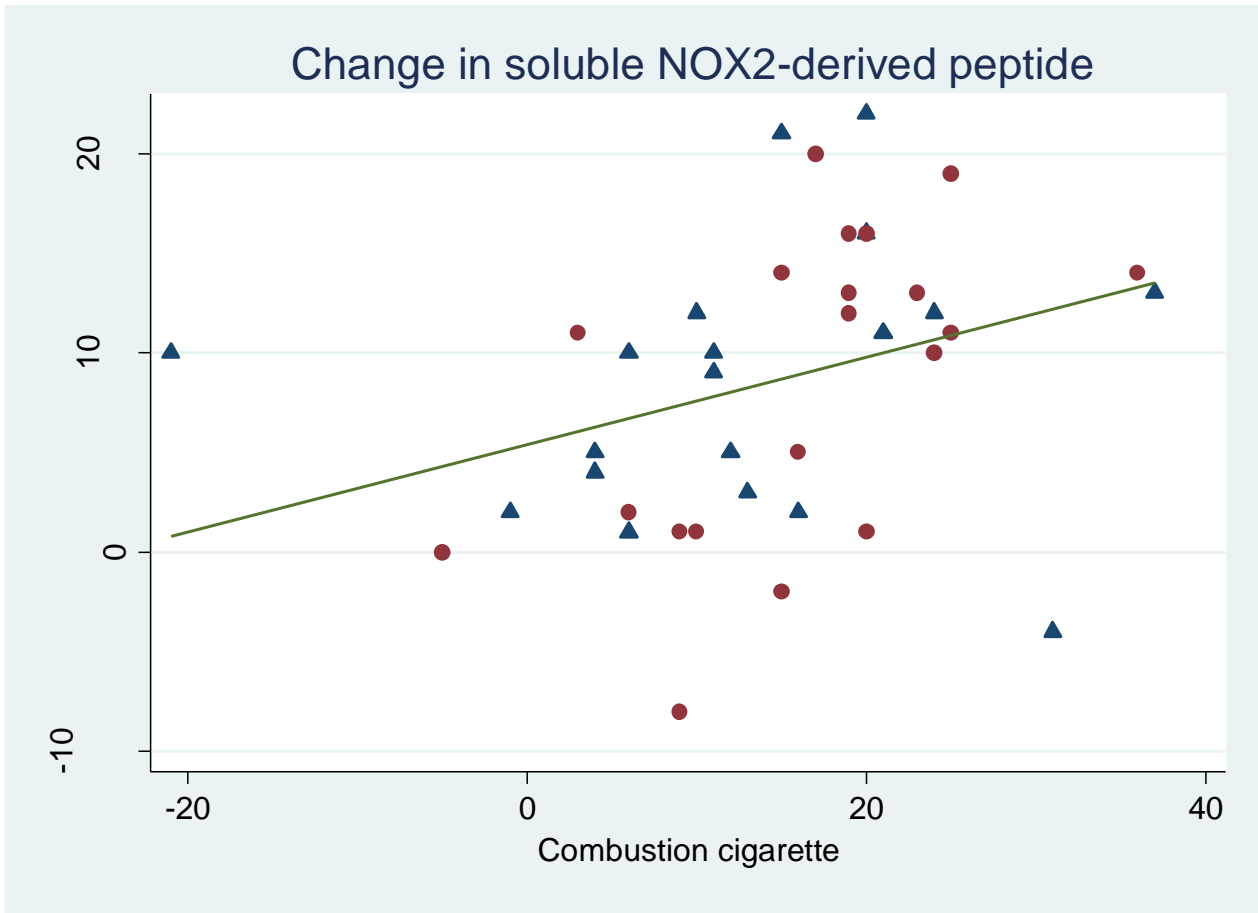


Figure 2S. Association between baseline and post-exposure changes in nitric oxide (NO) production after smoking a combustion cigarette and an electronic cigarette ( $p < 0.001$ ). Negative values indicate increased oxidative stress. Red dots indicate smokers, blue triangles indicate non-smokers

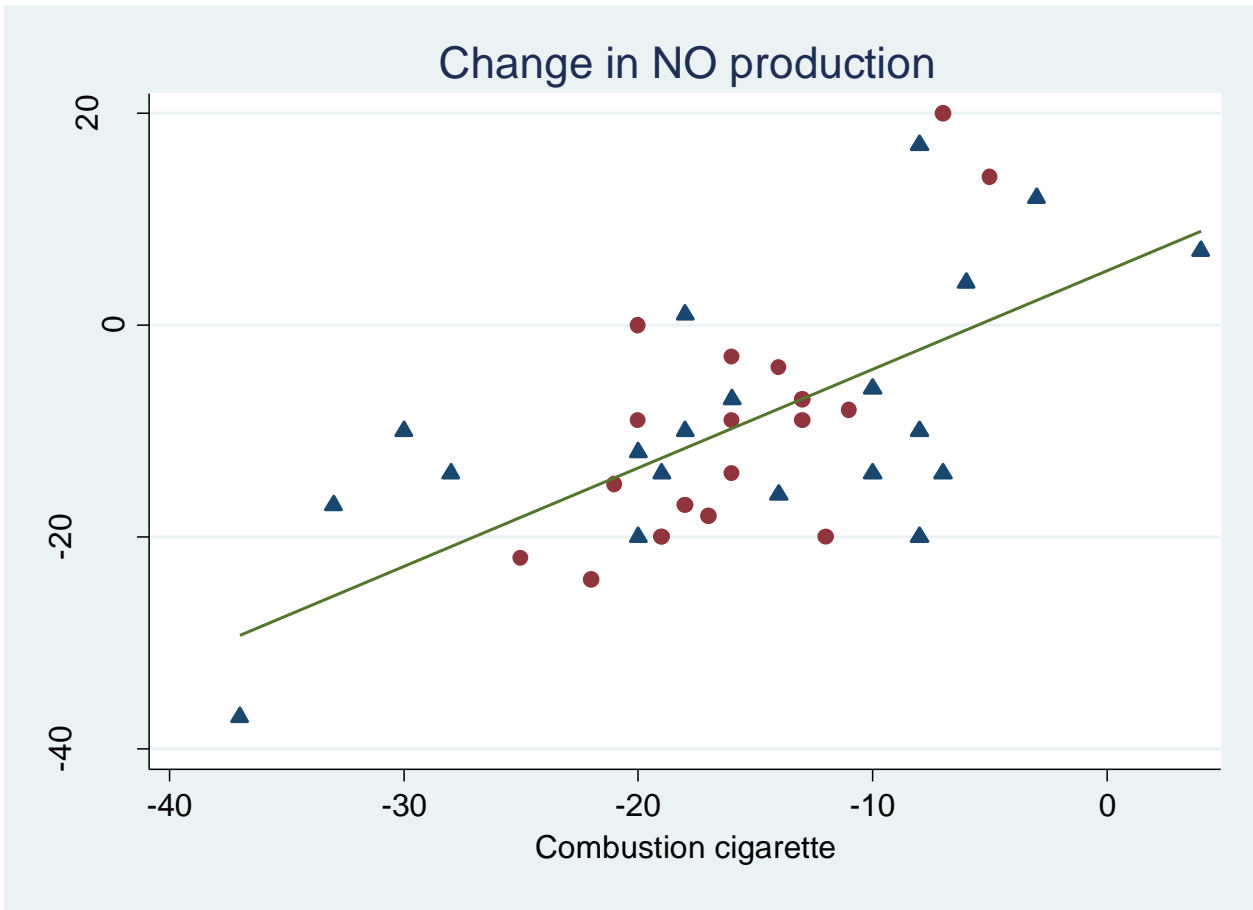


Figure 3S. Association between baseline and post-exposure changes in levels of in 8-iso-prostaglandin F2 $\alpha$ -III after smoking a combustion cigarette and an electronic cigarette ( $p=0.330$ ). Positive values indicate increased oxidative stress. Red dots indicate smokers, blue triangles indicate non-smokers

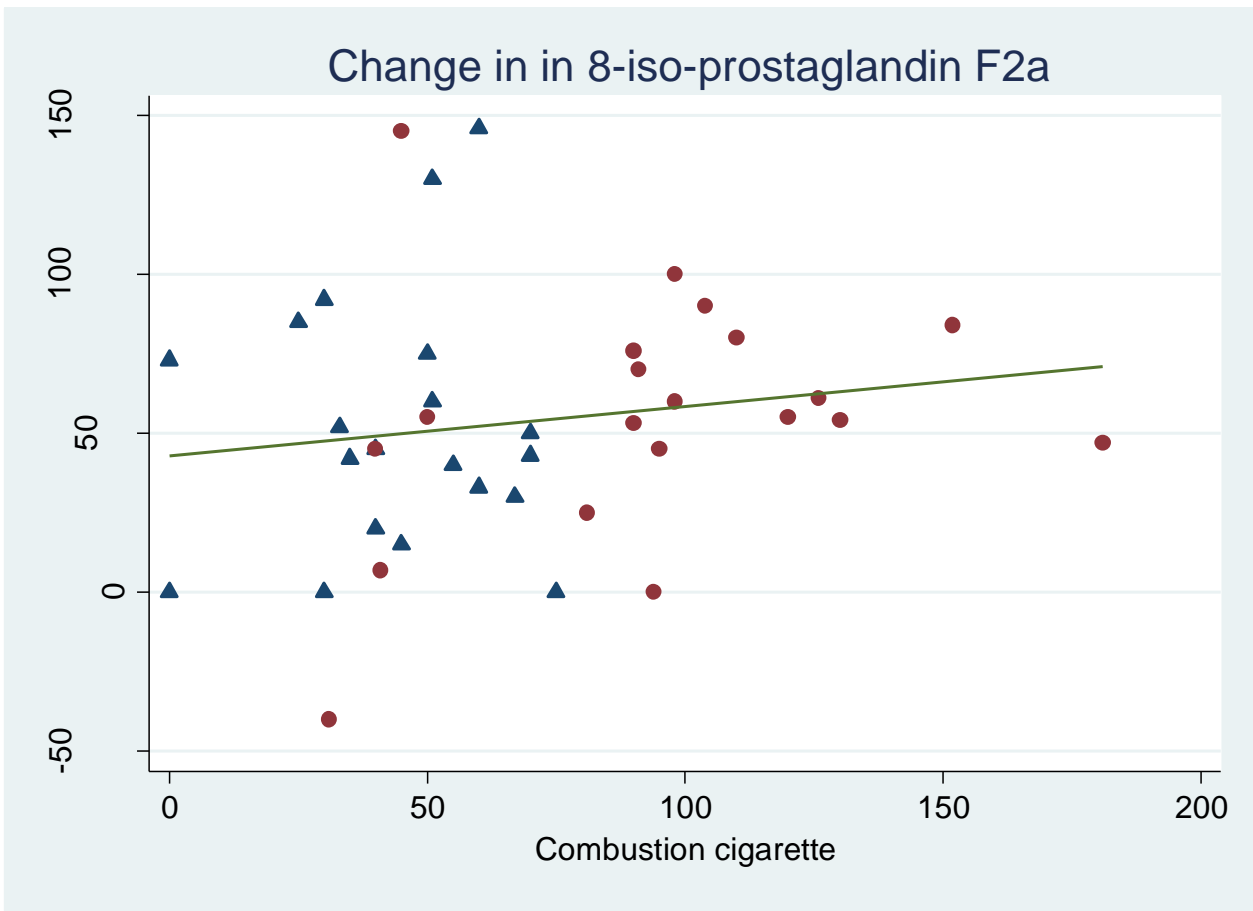


Figure 4S. Association between baseline and post-exposure changes in levels of vitamin E after smoking a combustion cigarette and an electronic cigarette ( $p=0.003$ ). Negative values indicate increased oxidative stress. Red dots indicate smokers, blue triangles indicate non-smokers

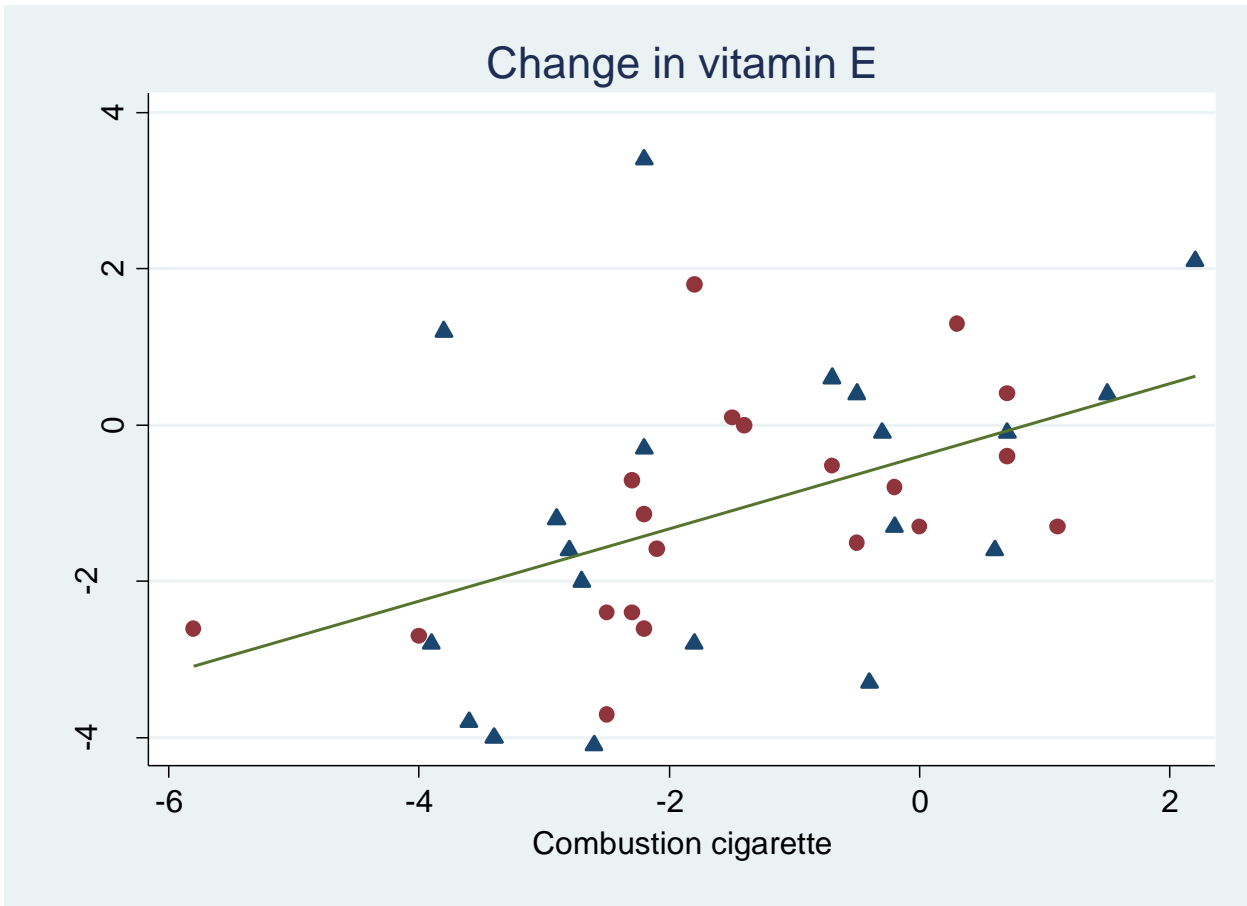


Figure 5S. Association between baseline and post-exposure changes in flow-mediated dilation (FMD) after smoking a combustion cigarette and an electronic cigarette ( $p=0.053$ ). Negative values indicate worse vascular function. Red dots indicate smokers, blue triangles indicate non-smokers

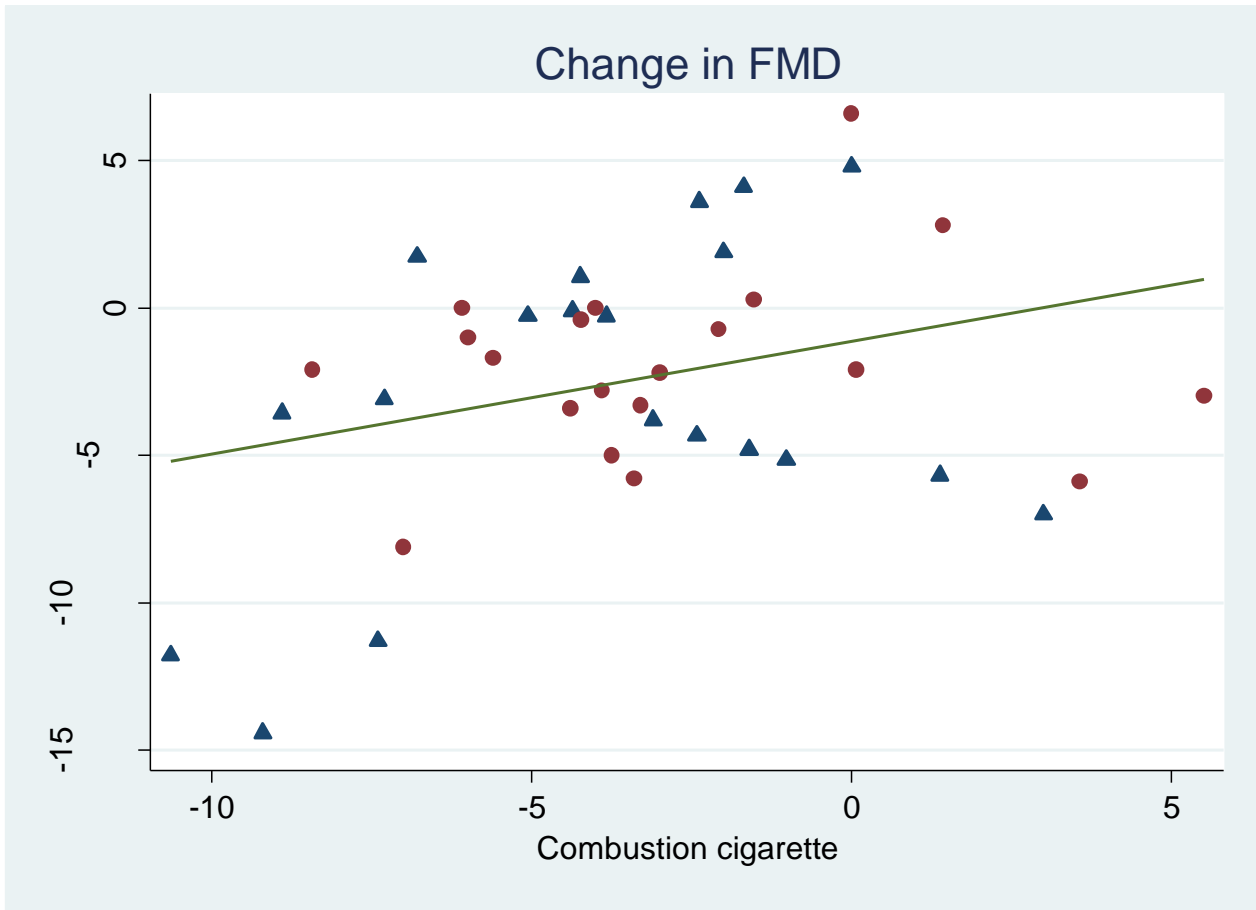


Figure 6S. Association between baseline and post-exposure changes in levels of in 8-iso-prostaglandin F2 $\alpha$ -III after smoking a combustion cigarette and an electronic cigarette ( $p=0.330$ ). Positive values indicate increased oxidative stress. Red dot indicates the subject using levetiracetam, blue triangles indicate the other subjects

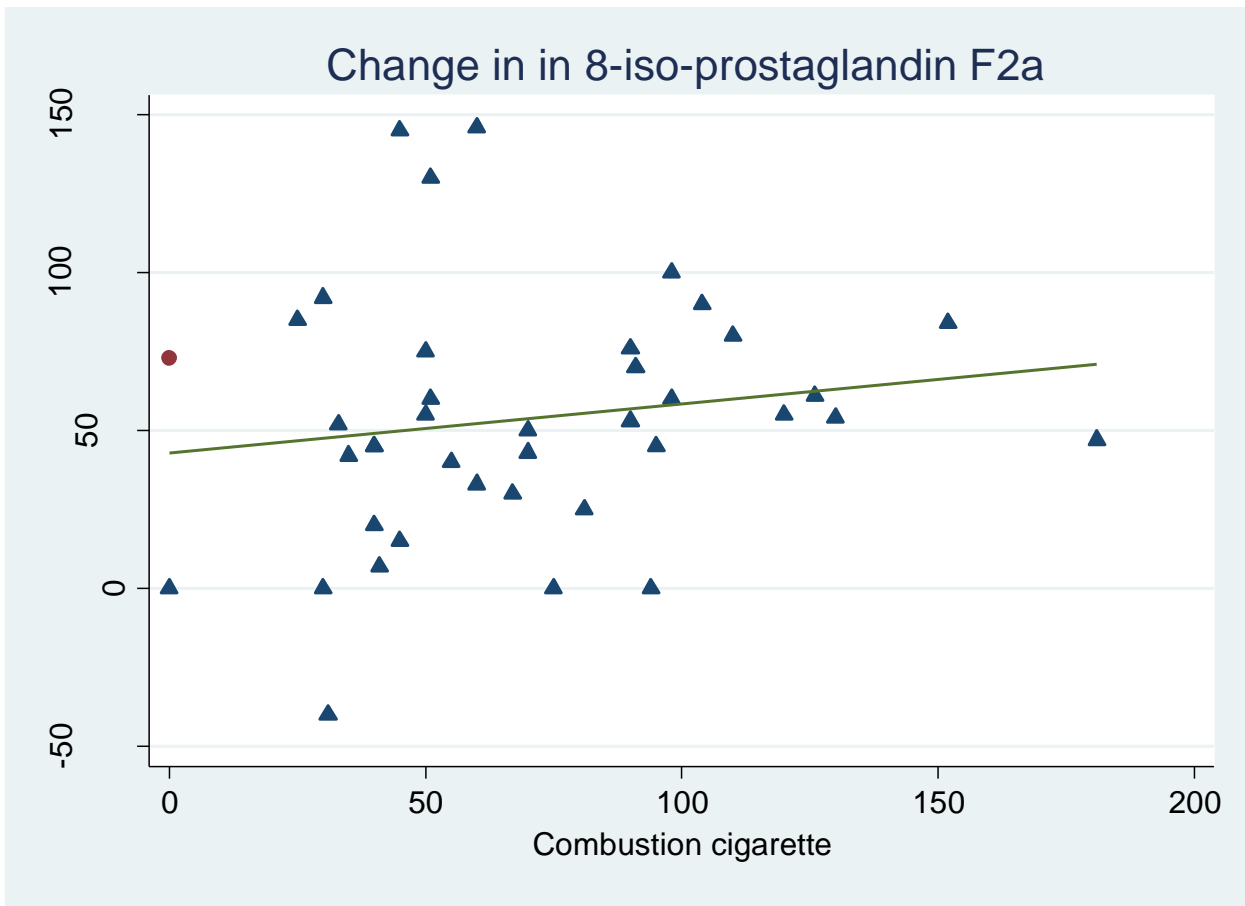


Figure 7S. Association between baseline and post-exposure changes in levels of vitamin E after smoking a combustion cigarette and an electronic cigarette ( $p=0.003$ ). Negative values indicate increased oxidative stress. Red dots indicate subjects using oral contraceptives, blue triangles indicate the others

