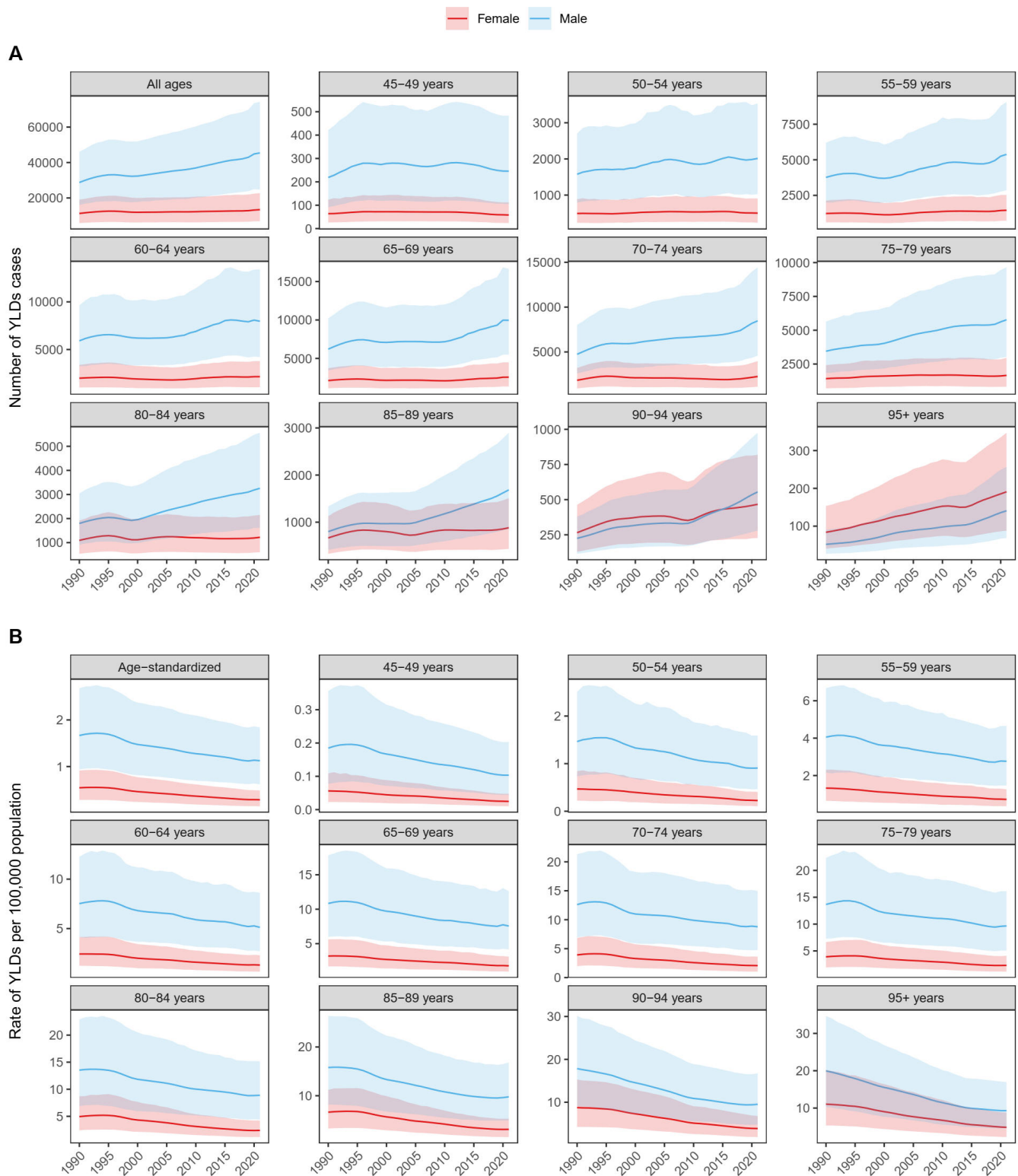


## Supplementary file

**Figure 1.** Global burden of smoking-associated AMD across age groups stratified by sex, 1990–2021

(A) Trends in YLDs cases (1990–2021)

(B) Trends in age-standardized YLDs rate (1990–2021)



YLDs: years lived with disability. Shaded areas represent 95% uncertainty intervals.

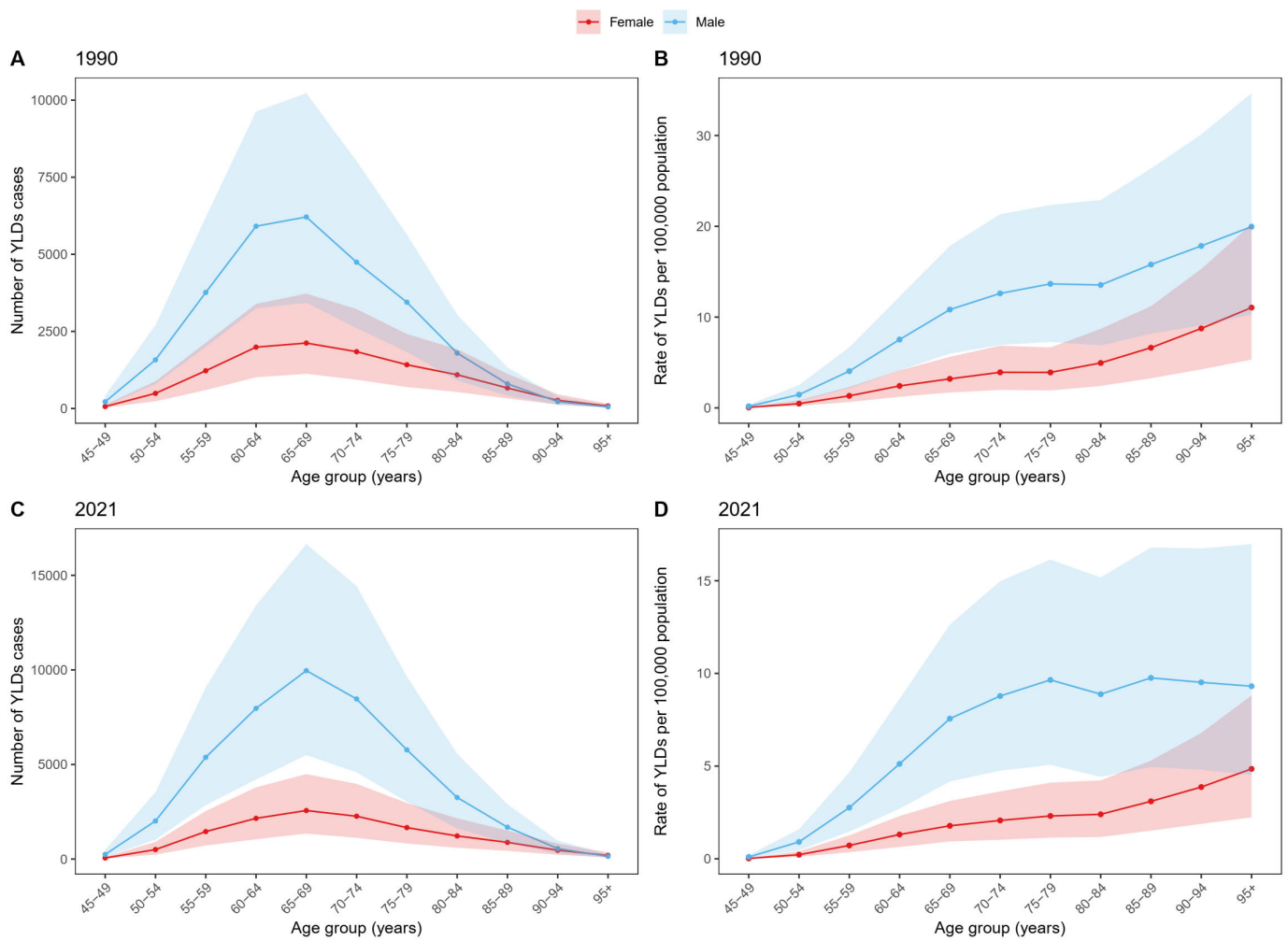
**Figure 2.** Comparative burden of smoking-associated AMD across age groups between 1990 and 2021

(A) Distribution of YLDs cases (1990)

(B) Distribution of age-standardized YLDs rate (1990)

(C) Distribution of YLDs cases (2021)

(D) Distribution of age-standardized YLDs rate (2021)



YLDs: years lived with disability. Shaded areas represent 95% uncertainty intervals.

**Figure 3.** Burden of smoking-associated AMD by SDI regions, 1990–2021.

(A) Trends in YLDs cases stratified by SDI (Both)

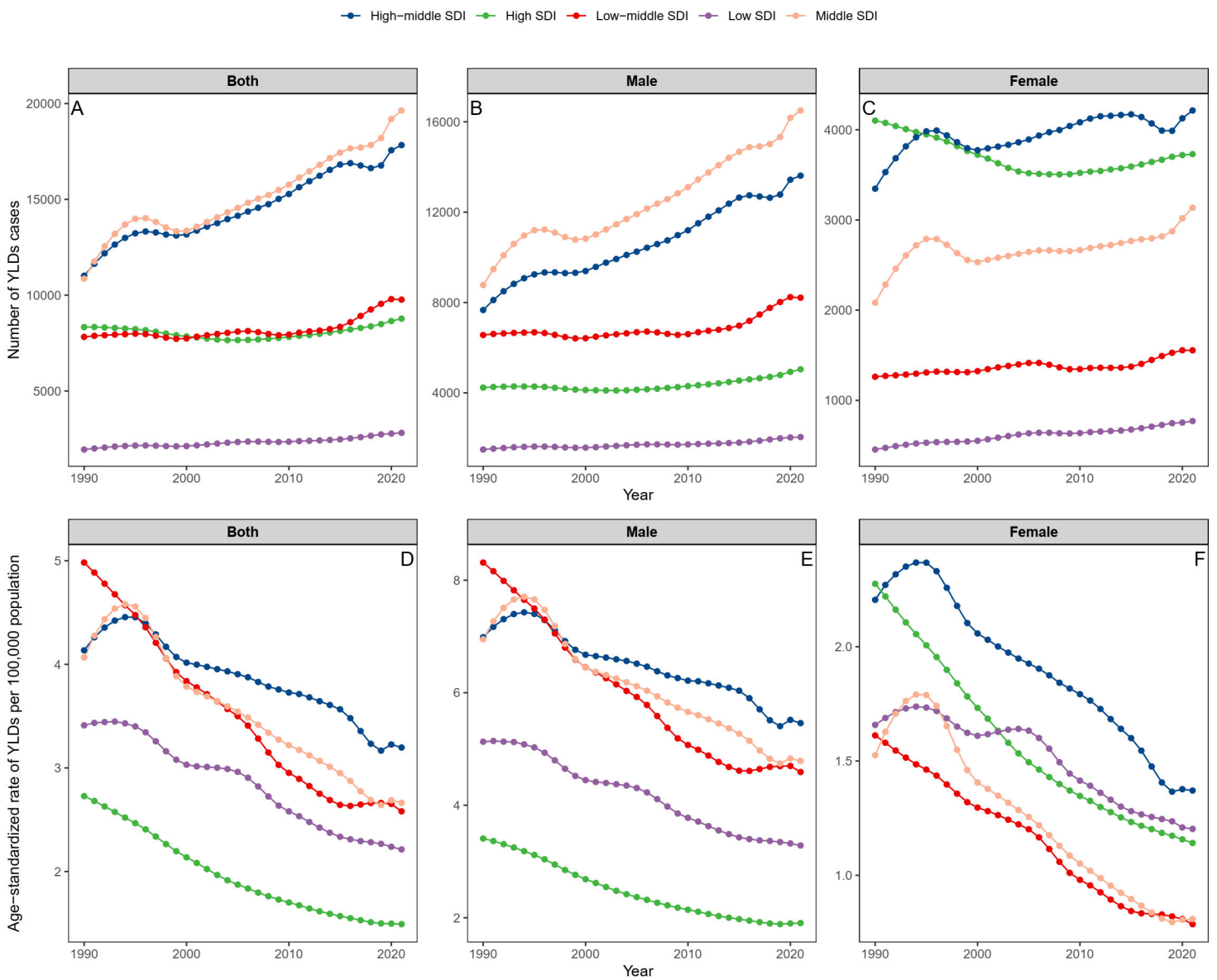
(B) Trends in YLDs cases stratified by SDI (Male)

(C) Trends in YLDs cases stratified by SDI (Female)

(D) Trends in age-standardized YLDs rate stratified by SDI (Both)

(E) Trends in age-standardized YLDs rate stratified by SDI (Male)

(F) Trends in age-standardized YLDs rate stratified by SDI (Female)



YLDs: years lived with disability. SDI: sociodemographic index.

**Figure 4.** ARIMA model projections of the global burden of smoking-associated AMD by sex, 2022–2040.

(A) Predictions of the cases of YLDs from 2022 to 2040 (Both)

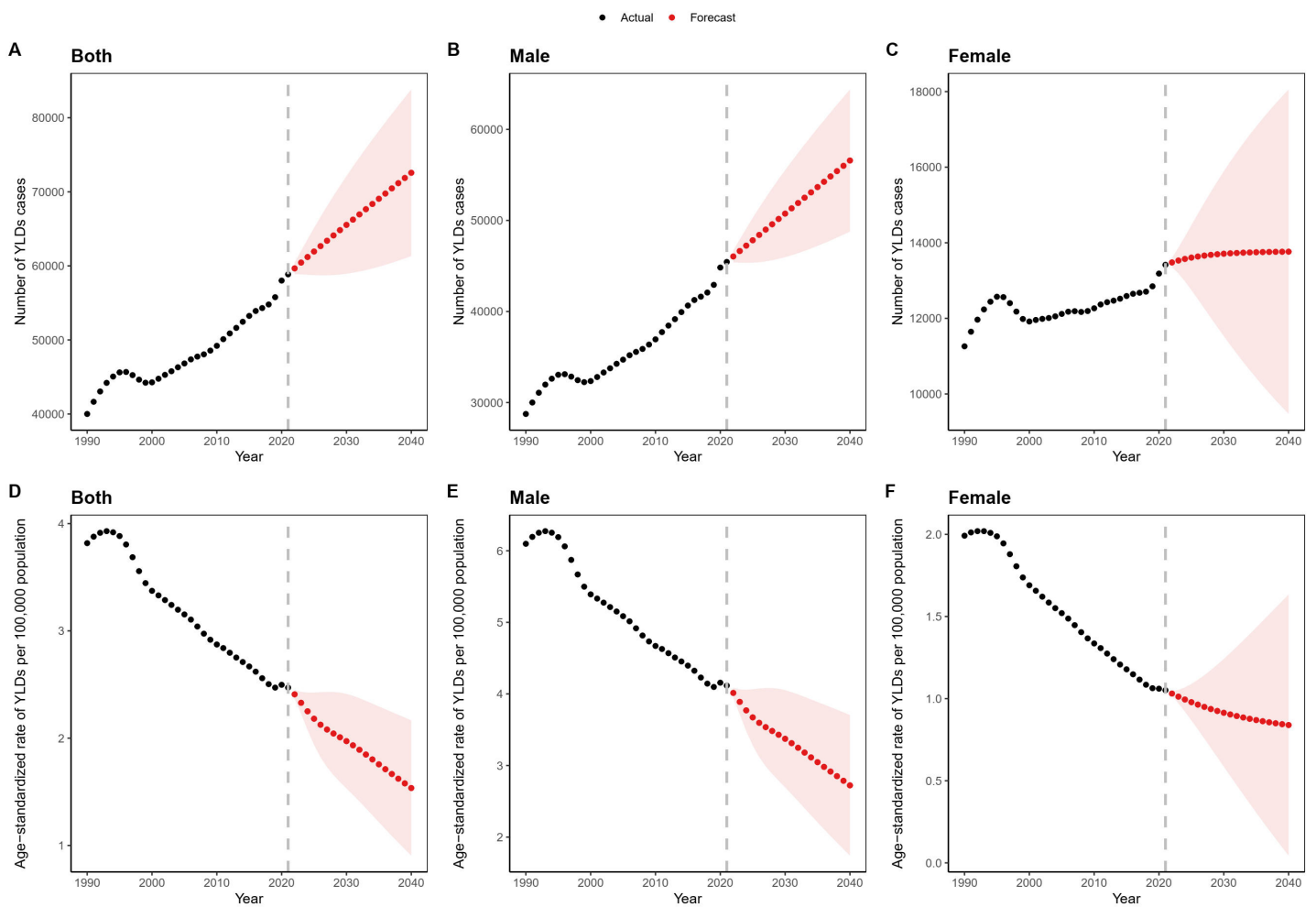
(B) Predictions of the cases of YLDs from 2022 to 2040 (Male)

(C) Predictions of the cases of YLDs from 2022 to 2040 (Female)

(D) Predictions of the age-standardized YLDs rate from 2022 to 2040 (Both)

(E) Predictions of the age-standardized YLDs rate from 2022 to 2040 (Male)

(F) Predictions of the age-standardized YLDs rate from 2022 to 2040 (Female)



ARIMA: autoregressive integrated moving average. YLDs: years lived with disability. Shaded areas represent 95% confidence interval.