

Supplementary File

Supplementary Figure 1

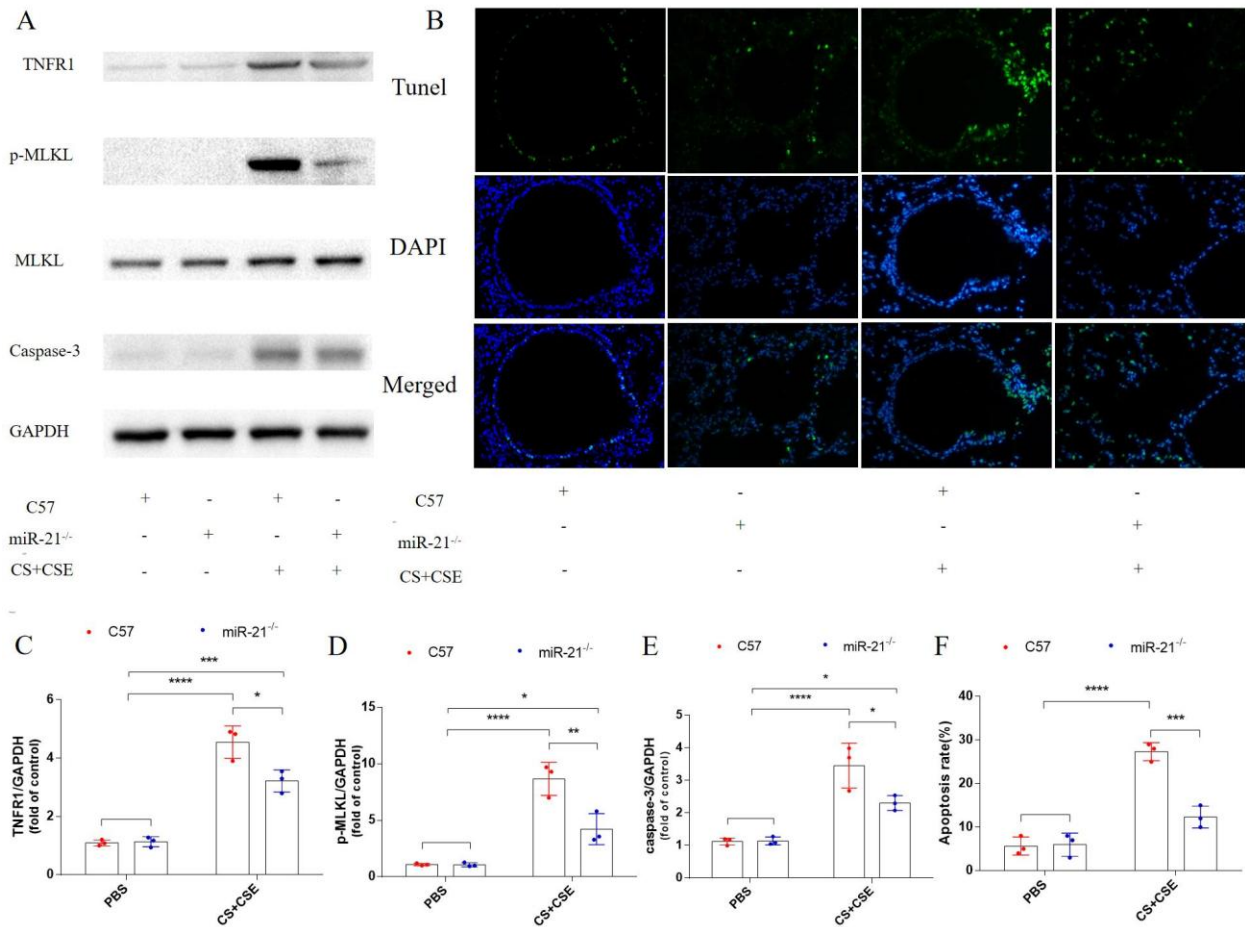


Figure 1. miR-21 targets TNFR1 to accrete necroptosis and apoptosis in COPD mice. Control group: C57/miR-21^{-/-}+PBS. C57+CS+CSE group: C57BL/6 mice were intervened by CS exposure combined with CSE intraperitoneal injection. miR-21^{-/-}+ CS +CSE group: miR-21^{-/-} mice were intervened by CS exposure combined with CSE intraperitoneal injection. (A) Western blot analysis of tumor necrosis factor receptor 1 (TNFR1), phosphorylated mixed lineage kinase domain like protein (p-MLKL), MLKL and caspase-3 in lungs of C57 mice and miR-21^{-/-} mice with glyceraldehyde-3-phosphate dehydrogenase (GAPDH) as the loading control. (B) Apoptosis detected via TUNEL assay. (400×magnification). (F) Apoptosis rate in each group. n=3-4 mice per group. *P < 0.05, **P < 0.01, ***P < 0.001, ****P < 0.0001. Values are provided as mean ± SD and analyzed with 2-way analysis of variance.

Supplementary Figure 2

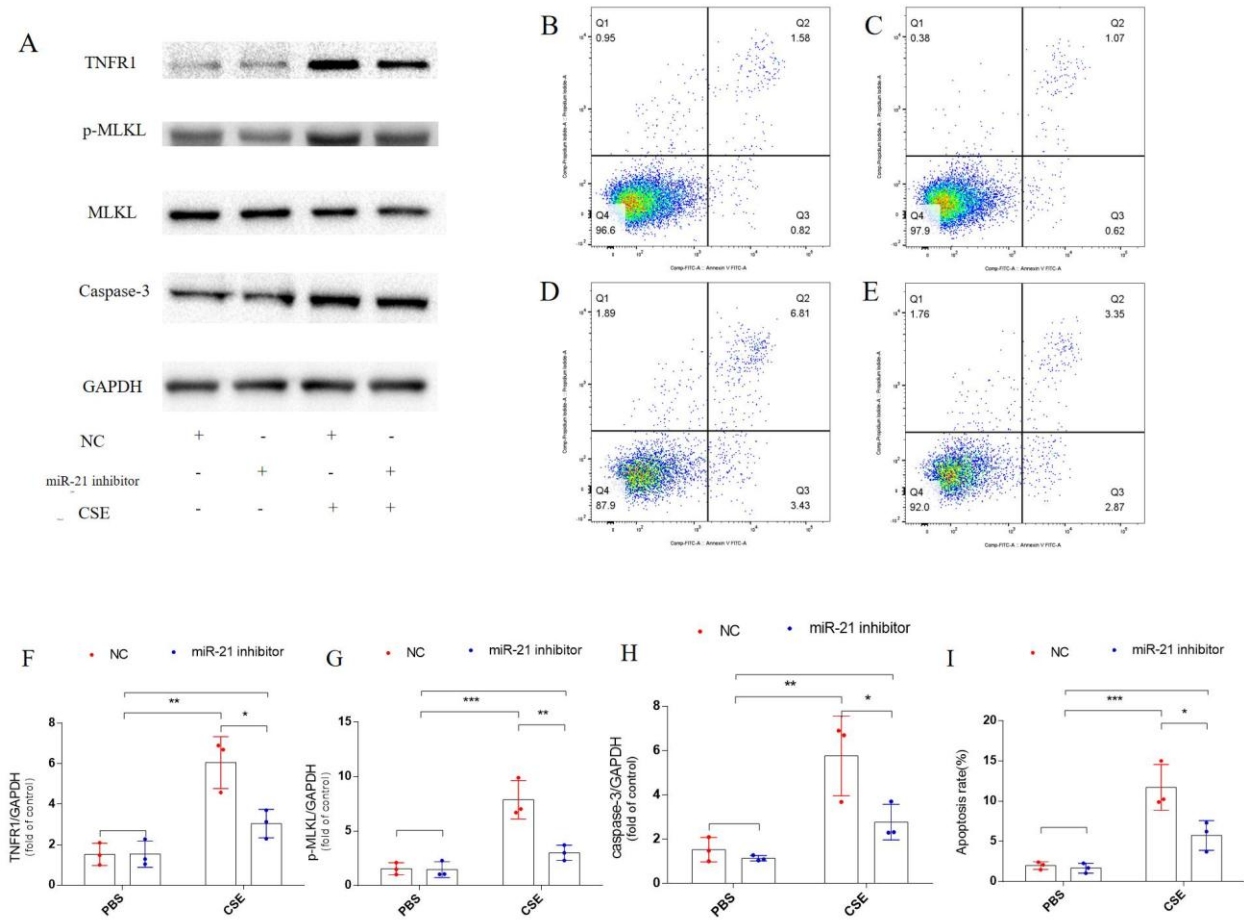


Figure 2. miR-21 targets TNFR1 to accrete necroptosis and apoptosis in 16HBE cells. 16HBE cells were transfected with miR-21 inhibitor before CSE treatment. (A) Western blot analysis of TNFR1, p-MLKL, MLKL, and caspase-3 in 16HBE cells or combined miR-21 inhibitor treatment with GAPDH as the loading control. (B-E) Cell apoptosis was measured by flow cytometry. B. NC+PBS, C. miR-21 inhibitor+PBS, D. NC+CSE, E. miR-21 inhibitor + CSE. $n=5$ per group. * $P < 0.05$, ** $P < 0.01$, *** $P < 0.001$. Values are provided as mean \pm SD and analyzed with 2-way analysis of variance.