

Supplemental

- Supplementary Table S1 The trends in the tobacco-related lung cancer DALYs burden in the Global from 1990 to 2021
- Supplementary Figure S1 Temporal trends of the numbers of DALYs, all-age DALYs, and ASDR for tobacco-related lung cancer for both sexes combined among the six WHO regions from 1990 to 2021.
- Supplementary Figure S2 The relationship between SDI levels and the age-standardized DALYs for tobacco-related lung cancer in the Western Pacific Region from 1990 to 2021
- Supplementary Figure S3 The relationship between SDI levels and the age-standardized death rate for smoking-related lung cancer in the Western Pacific Region from 1990 to 2021
- Supplementary Figure S4 The relationship between SDI levels and the age-standardized death rate for secondhand smoke-related lung cancer in the Western Pacific Region from 1990 to 2021
- Supplementary Figure S5 The relationship between SDI levels and the age-standardized DALYs for smoking-related lung cancer in the Western Pacific Region from 1990 to 2021
- Supplementary Figure S6 The relationship between SDI levels and the age-standardized DALYs for secondhand smoke-related lung cancer in the Western Pacific Region from 1990 to 2021
- Supplementary Figure S7 The temporal change of the DALYs rate attributed to tobacco-related lung cancer across age groups in the Western Pacific Region from 1990 to 2021
- Supplementary Figure S8 The local drifts, age effects, period effects, and cohort effects of tobacco-related lung cancer related DALYs rate in the Western Pacific Region from 1990 to 2021.
- Supplementary Figure S9 The joinpoint regression analysis of the tobacco-related lung cancer burden in the Western Pacific Region from 1990 to 2021.
- Supplementary Figure S10 The joinpoint regression analysis of the tobacco-related lung cancer burden in Global from 1990 to 2021.
- Supplementary Figure S11 The joinpoint regression analysis of the smoking-related lung cancer burden in the Western Pacific Region from 1990 to 2021.
- Supplementary Figure S12 The joinpoint regression analysis of the secondhand smoke-related lung cancer burden in the Western Pacific Region from 1990 to 2021.
- Supplementary Figure S13 The joinpoint regression analysis of the smoking-related lung cancer burden in Global from 1990 to 2021.
- Supplementary Figure S14 The joinpoint regression analysis of the secondhand smoke-related lung cancer burden in Global from 1990 to 2021.

Supplementary Table S1 The trends in the tobacco-related lung cancer DALYs burden in the Global from 1990 to 2021

Sex	DALYs		All-age DALYs		ASDR		Net drift of DALYs ^b , % per year
	Number in 2021 ^a , n	Change of numbers 1990-2021, %	Rate in 2021, per 100000	Percent change 1990-2021, %	Rate in 2021, per 100000	Percent change 1990-2021, %	
Global	28768021.6	44.21	364.6	-2.53	327.8	-32.45	-1.26
Both	(24948938 to 33061214.1)	(24.6 to 65.81)	(316.2 to 419)	(-15.79 to 12.07)	(284.2 to 376.8)	(-41.6 to -22.45)	(-1.35 to -1.17)
Tobacco	5516414.7	69.37	140.3	14.06	119.3	-21.1	-0.96
Female	(4306882 to 6740465.2)	(51.67 to 89.02)	(109.5 to 171.4)	(2.14 to 27.29)	(93 to 145.9)	(-29.3 to -11.83)	(-1.02 to -0.89)
Male	23251607	39.3	587.3	-5.51	561.6	-35.05	-1.4
Both	(20027487.3 to 26946174.4)	(15.98 to 64.11)	(505.8 to 680.6)	(-21.33 to 11.32)	(484 to 650.2)	(-45.77 to -23.75)	(-1.51 to -1.3)
Smoking	27713689.2	43.17	351.2	-3.23	315.7	-33	-1.17
Both	(24404593.2 to 31596581.2)	(23.41 to 64.74)	(309.3 to 400.4)	(-16.59 to 11.35)	(278.2 to 359.9)	(-42.18 to -22.98)	(-1.25 to -1.08)
Female	4780176.6	66.35	121.6	12.03	103.1	-22.86	-0.95
Female	(4165305.6 to 5493258.4)	(50.21 to 83.37)	(105.9 to 139.7)	(1.16 to 23.49)	(89.9 to 118.4)	(-30.19 to -15.1)	(-1.02 to -0.88)

		22933512.6	39.13	579.2	-5.62	553.8	-35.16	-1.31
	Male	(19793991.4 to 26526587.7)	(15.84 to 63.97)	(499.9 to 670)	(-21.43 to 11.22)	(479.3 to 639.6)	(-45.86 to -23.86)	(-1.41 to -1.22)
		2355866	47.35	29.9	-0.41	26.9	-29.89	-1.1
	Both	(290210.9 to 4442996.3)	(26.29 to 71.3)	(3.7 to 56.3)	(-14.65 to 15.78)	(3.3 to 50.8)	(-39.75 to -18.58)	(-1.21 to -1)
		996309.4	72.39	25.3	16.09	21.8	-17.88	-0.82
Secondhand smoke	Female	(135988.2 to 1907079)	(40.55 to 109.97)	(3.5 to 48.5)	(-5.35 to 41.4)	(3 to 41.8)	(-32.85 to -0.17)	(-0.9 to -0.74)
		1359556.6	33.17	34.3	-9.67	32.9	-36.63	-1.34
	Male	(158640 to 2596453.4)	(7.72 to 62.1)	(4 to 65.6)	(-26.93 to 9.96)	(3.8 to 62.8)	(-48.59 to -22.9)	(-1.47 to -1.21)
	Western Pacific Region							
		14615025.5	125.82	759.1	80.8	503.9	-5.8	-0.17
Tobacco	Both	(11614074.6 to 18203951.7)	(68.73 to 194.98)	(603.2 to 945.5)	(35.1 to 136.18)	(400.8 to 627.4)	(-29.35 to 22.66)	(-0.32 to -0.01)
		2255437.7	129.29	238.4	82.71	149	-6.82	-0.68
	Female	(1496664.7 to 3154639.2)	(74.3 to 200.97)	(158.2 to 333.4)	(38.89 to 139.83)	(97.5 to 209.1)	(-29.17 to 21.17)	(-0.81 to -0.55)

Smoking	Male	12359587.8	125.19	1262.4	81.14	893.5	-5.99	-0.09	
		(9591289.3 to 15733255.4)	(59.27 to 206.62)	(979.7 to 1607)	(28.11 to 146.63)	(694.6 to 1133.3)	(-32.91 to 26.71)	(-0.28 to 0.1)	
	Both	13927994.7	126.34	723.4	81.23	479.4	-5.9	-0.06	
		(11085580.5 to 17403470)	(66.41 to 198.33)	(575.8 to 903.9)	(33.24 to 138.86)	(381.6 to 597.9)	(-30.57 to 23.61)	(-0.23 to 0.1)	
	Female	1714642.8	135.4	181.2	87.57	111.7	-6.94	-0.67	
		(1322771.1 to 2215012.2)	(77.21 to 211.31)	(139.8 to 234.1)	(41.21 to 148.07)	(85.9 to 144)	(-29.67 to 22.46)	(-0.86 to -0.48)	
	Secondhand smoke	Male	12213351.9	125.13	1247.5	81.09	882.3	-6.11	-0.01
			(9468100.2 to 15509922.7)	(59.1 to 206.71)	(967.1 to 1584.2)	(27.98 to 146.71)	(687.6 to 1116.4)	(-33.09 to 26.64)	(-0.22 to 0.19)
		Both	1485063.6	118.99	77.1	75.34	51.9	-6.07	-0.31
			(187691.8 to 2776391.9)	(71.75 to 179.31)	(9.7 to 144.2)	(37.52 to 123.63)	(6.6 to 97.3)	(-26.11 to 19.4)	(-0.44 to -0.18)
Female		701642.3	108.32	74.1	66	47.8	-10.06	-0.72	
		(96388.6 to 1346530.9)	(54.07 to 178.65)	(10.2 to 142.3)	(22.77 to 122.04)	(6.6 to 91.9)	(-33.01 to 19.99)	(-0.83 to -0.61)	

		783421.4						
	Male		129.51	80	84.61	57.3	-2.53	0.07
		(86527.8 to 1553687.7)	(52.81 to 226.81)	(8.8 to 158.7)	(22.92 to 162.88)	(6.3 to 113.4)	(-34.44 to 37.14)	(-0.12 to 0.27)
	South-East Asia Region							
		2383482						
	Both		115.81	115.5	36.29	125.9	-14.48	-0.68
		(1998245.5 to 2789798.6)	(62.98 to 160.25)	(96.8 to 135.2)	(2.92 to 64.35)	(105.9 to 147.4)	(-35.34 to 3.2)	(-0.8 to -0.56)
		265901.8						
Tobacco	Female		124.01	26.1	39.54	27.7	-15.71	-0.78
		(171191.5 to 387043)	(75.63 to 191.12)	(16.8 to 38)	(9.4 to 81.35)	(18.1 to 40.1)	(-34.26 to 9.2)	(-0.9 to -0.67)
		2117580.2						
	Male		114.82	202.5	37.46	231.3	-10.48	-0.51
		(1810202.9 to 2453529.6)	(58.52 to 163.37)	(173.1 to 234.6)	(1.43 to 68.52)	(198.3 to 267.4)	(-33.46 to 9.19)	(-0.65 to -0.38)
		2273943.3						
	Both		113.58	110.2	34.88	120.3	-15.47	-0.67
		(1947412.3 to 2622069.5)	(60.8 to 158.3)	(94.4 to 127.1)	(1.55 to 63.12)	(103 to 138.7)	(-36.32 to 1.99)	(-0.8 to -0.55)
Smoking		192838.1						
	Female		110.86	18.9	31.35	20.4	-21.53	-1.08
		(149246.2 to 243463)	(64.14 to 178.51)	(14.7 to 23.9)	(2.25 to 73.49)	(15.9 to 25.7)	(-38.92 to 3.31)	(-1.23 to -0.93)

		2081105.2	113.83	199	36.82	227.5	-10.92	-0.47
	Male	(1785092.5 to 2411889.5)	(57.87 to 161.51)	(170.7 to 230.6)	(1.02 to 67.33)	(194.9 to 262.9)	(-33.87 to 8.57)	(-0.61 to -0.33)
		187226.5	140.79	9.1	52.06	9.7	-3.17	-0.38
	Both	(23689 to 359492.3)	(83.3 to 191.49)	(1.1 to 17.4)	(15.76 to 84.08)	(1.2 to 18.7)	(-26 to 17.21)	(-0.48 to -0.28)
		83627.1	149.3	8.2	55.29	8.4	-2.66	-0.43
Secondhand smoke	Female	(11329.7 to 166465.2)	(91.66 to 222.07)	(1.1 to 16.4)	(19.39 to 100.63)	(1.1 to 16.7)	(-25.3 to 25.33)	(-0.52 to -0.34)
		103599.3	134.33	9.9	49.94	11.2	-2.24	-0.3
	Male	(12853.4 to 197715.9)	(68.81 to 196.13)	(1.2 to 18.9)	(8.02 to 89.48)	(1.4 to 21.3)	(-29.43 to 23.82)	(-0.45 to -0.14)
	Region of the Americas	3662478.2	-5.89	356.7	-34.37	270	-57.92	-2.89
	Both	(3278872 to 4015925.6)	(-10.39 to -1.96)	(319.3 to 391.1)	(-37.51 to -31.63)	(241.7 to 296)	(-59.92 to -56.15)	(-2.96 to -2.82)
Tobacco		1424703.6	19.83	272.3	-16.66	195.8	-46.3	-2.13
	Female	(1251525.6 to 1592405.5)	(12.89 to 26.35)	(239.2 to 304.4)	(-21.48 to -12.13)	(172.4 to 218.5)	(-49.36 to -43.41)	(-2.21 to -2.05)

		2237774.5	-17.21	444.3	-42.09	356.8	-63.28	-3.42
	Male	(2012598.2 to 2439612.5)	(-21.07 to -13.52)	(399.6 to 484.4)	(-44.8 to -39.52)	(320.5 to 389.3)	(-65.01 to -61.64)	(-3.49 to -3.34)
		3591664.8	-6.12	349.8	-34.53	264.6	-58.04	-2.79
	Both	(3262580.3 to 3897482.1)	(-10.44 to -2.28)	(317.7 to 379.5)	(-37.54 to -31.85)	(240.4 to 287.1)	(-59.95 to -56.34)	(-2.83 to -2.74)
		1392089.3	19.73	266.1	-16.73	191.2	-46.39	-1.98
Smoking	Female	(1243343.9 to 1535672.7)	(12.85 to 26.26)	(237.6 to 293.5)	(-21.51 to -12.18)	(171.2 to 210.6)	(-49.45 to -43.49)	(-2.04 to -1.93)
		2199575.5	-17.41	436.7	-42.23	350.5	-63.39	-3.35
	Male	(2001630.1 to 2375374.9)	(-21.23 to -13.78)	(397.4 to 471.6)	(-44.91 to -39.7)	(318.8 to 378.9)	(-65.08 to -61.79)	(-3.4 to -3.3)
		177646	-28.6	17.3	-50.2	13.3	-67.68	-3.5
	Both	(22276.1 to 343541.7)	(-34.69 to -23.41)	(2.2 to 33.5)	(-54.45 to -46.59)	(1.7 to 25.8)	(-70.42 to -65.38)	(-3.59 to -3.41)
Secondhand smoke		69655.7	-12.85	13.3	-39.39	9.8	-60.39	-2.87
	Female	(8813.4 to 135471.9)	(-20.3 to -4.77)	(1.7 to 25.9)	(-44.57 to -33.77)	(1.2 to 19.2)	(-63.88 to -56.71)	(-2.94 to -2.79)

		107990.3	-36.05	21.4	-55.28	17.3	-71.25	-3.97
	Male	(13462.7 to 207833.4)	(-42.68 to -30.18)	(2.7 to 41.3)	(-59.91 to -51.17)	(2.2 to 33.4)	(-74.22 to -68.69)	(-4.07 to -3.87)
	European Region							
		6658084.7	-14.82	713.3	-21.68	427.8	-41.98	-1.77
	Both	(6015307.6 to 7233645.3)	(-19.18 to -10.88)	(644.4 to 774.9)	(-25.69 to -18.06)	(386.9 to 464.1)	(-44.87 to -39.39)	(-1.86 to -1.68)
		1433260.6	57.86	299	45.95	170	12.02	0.46
Tobacco	Female	(1236882.6 to 1608676.3)	(50.04 to 65.14)	(258 to 335.6)	(38.71 to 52.67)	(147.7 to 190.9)	(6.75 to 17.11)	(0.39 to 0.54)
		5224824.1	-24.37	1150.6	-30.86	737.8	-51.04	-2.49
	Male	(4765860.2 to 5642466.6)	(-28.67 to -20.56)	(1049.5 to 1242.5)	(-34.79 to -27.37)	(673 to 797.3)	(-53.84 to -48.6)	(-2.58 to -2.39)
		6532814.3	-14.87	699.9	-21.72	419.4	-42.03	-1.62
	Both	(6000352.7 to 7008750.7)	(-19.25 to -11.13)	(642.8 to 750.9)	(-25.75 to -18.28)	(385.4 to 448.9)	(-44.91 to -39.53)	(-1.69 to -1.55)
Smoking		1376413.8	62.86	287.2	50.56	162.9	15.54	0.74
	Female	(1228855 to 1507256)	(54.49 to 70.67)	(256.4 to 314.5)	(42.82 to 57.79)	(145.9 to 178)	(9.76 to 21.18)	(0.68 to 0.81)

		5156400.5	-24.49	1135.5	-30.96	727.9	-51.12	-2.38
	Male	(4748935.5 to 5532241.9)	(-28.79 to -20.74)	(1045.8 to 1218.3)	(-34.89 to -27.54)	(670.4 to 781.6)	(-53.93 to -48.69)	(-2.45 to -2.31)
	Both	378371.6	-29.31	40.5	-35	25.1	-50.94	-2.17
	Female	(48413.7 to 728993.3)	(-35.47 to -22.44)	(5.2 to 78.1)	(-40.66 to -28.68)	(3.2 to 48.4)	(-55.31 to -46.23)	(-2.24 to -2.1)
Secondhand smoke	Both	102750	-8.54	21.4	-15.44	13	-33.51	-1.3
	Female	(12678.3 to 198818.5)	(-18.27 to -0.16)	(2.6 to 41.5)	(-24.44 to -7.7)	(1.6 to 25)	(-40.5 to -27.4)	(-1.39 to -1.22)
	Male	275621.6	-34.82	60.7	-40.41	39.6	-56.69	-2.68
	Both	(35735.4 to 529539.1)	(-41.13 to -27.89)	(7.9 to 116.6)	(-46.18 to -34.08)	(5.1 to 76.1)	(-60.84 to -52.21)	(-2.75 to -2.61)
	Eastern Mediterranean Region	916428.5	155.28	121.7	27.38	190.6	0.74	0.18
	Both	(768035.6 to 1085175.8)	(107.46 to 221.8)	(102 to 144.1)	(3.51 to 60.56)	(160.8 to 224.7)	(-18.54 to 26.7)	(0.1 to 0.25)
Tobacco	Female	68436.9	215.95	18.9	58.31	29.6	24.67	1.01
	Both	(40307.9 to 100257)	(124.34 to 328.99)	(11.1 to 27.7)	(12.4 to 114.95)	(17.8 to 42.7)	(-11.41 to 69.89)	(0.86 to 1.16)

Smoking	Male	847991.6	151.39	216.9	24.94	340	1.29	0.12
		(717455 to 1006101.1)	(102.26 to 219.33)	(183.5 to 257.3)	(0.52 to 58.71)	(289 to 402.6)	(-18.74 to 28.74)	(0.05 to 0.2)
	Both	878217	153.48	116.6	26.47	183.2	0.12	0.19
		(749257.6 to 1031465.4)	(105.35 to 219.02)	(99.5 to 137)	(2.46 to 59.17)	(156.5 to 215.3)	(-19.05 to 25.81)	(0.11 to 0.27)
	Female	48632.9	204.01	13.4	52.32	21.7	21.33	0.97
		(36929.3 to 62284.6)	(114.08 to 322.92)	(10.2 to 17.2)	(7.26 to 111.91)	(16.6 to 27.7)	(-14.68 to 68.29)	(0.77 to 1.18)
Secondhand smoke	Male	829584.1	151.03	212.2	24.76	333	1.19	0.16
		(707961 to 973375.6)	(102.02 to 219.1)	(181.1 to 249)	(0.41 to 58.59)	(284.1 to 391.2)	(-18.75 to 28.7)	(0.08 to 0.24)
	Both	86063.9	153.99	11.4	26.73	17.3	-1.21	0.09
		(10272 to 168271.9)	(105.1 to 219.7)	(1.4 to 22.3)	(2.34 to 59.51)	(2.1 to 33.8)	(-20.37 to 24.68)	(0.01 to 0.17)
	Female	23337.3	232.31	6.4	66.5	9.4	28.33	1.06
		(2792.3 to 46812.9)	(134.4 to 340.52)	(0.8 to 12.9)	(17.45 to 120.72)	(1.1 to 19)	(-8.52 to 70.87)	(0.89 to 1.23)
Male	62726.6	133.51	16	16.06	24.5	-7.2	-0.21	
		(85.28 to 203.16)	(1.9 to 31.5)	(-7.92 to 50.67)	(2.9 to 48.1)	(-26.23 to 19.87)	(-0.3 to -0.11)	

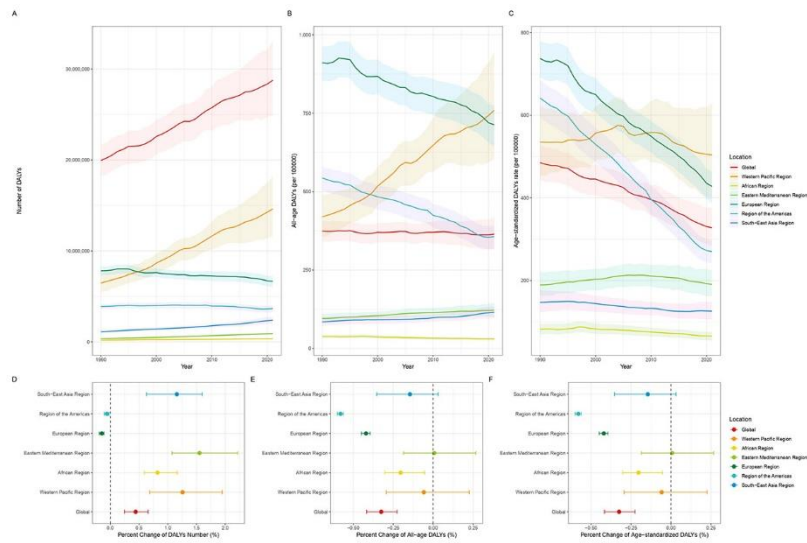
		(7448.7 to 123351.8)						
	African Region	355879.2	82.33	30.8	-19.63	65.6	-20.33	-1.13
	Both	(299592.5 to 415787.3)	(59.19 to 116.47)	(25.9 to 36)	(-29.83 to -4.58)	(55.2 to 76.3)	(-30.21 to -5.35)	(-1.28 to -0.98)
Tobacco	Female	44537.5	101.24	7.6	-11.78	16.1	-14.94	-1.06
		(32396.7 to 56975)	(57.77 to 168.04)	(5.5 to 9.7)	(-30.84 to 17.5)	(11.8 to 20.6)	(-33.38 to 13.79)	(-1.35 to -0.76)
	Male	311341.6	79.91	54.7	-20.25	121.7	-17.37	-1.04
		(266332.3 to 366089)	(56.37 to 115.54)	(46.8 to 64.3)	(-30.68 to -4.45)	(104.6 to 142.2)	(-27.86 to -1)	(-1.2 to -0.89)
	Both	341364.8	81.55	29.5	-19.97	63.1	-20.61	-1.06
		(297114.8 to 395715.7)	(58.47 to 116.22)	(25.7 to 34.2)	(-30.15 to -4.69)	(54.8 to 72.6)	(-30.55 to -5.63)	(-1.22 to -0.9)
Smoking	Female	38174.8	98.91	6.5	-12.81	14	-15.59	-1.12
		(30807 to 46135.7)	(54.37 to 170.08)	(5.3 to 7.9)	(-32.33 to 18.39)	(11.3 to 17)	(-34.26 to 14.98)	(-1.45 to -0.78)
	Male	303190.1	79.58	53.3	-20.4	118.7	-17.49	-0.96
		(263635.5 to 354255.6)	(56.14 to 115.13)	(46.3 to 62.3)	(-30.78 to -4.64)	(103.4 to 138.6)	(-27.91 to -1.17)	(-1.12 to -0.8)

		24558.7	71.5	2.1	-24.4	4.3	-25.84	-1.21
	Both	(3163.1 to 47109.3)	(43.58 to 106.15)	(0.3 to 4.1)	(-36.71 to -9.13)	(0.6 to 8.3)	(-37.63 to -11.15)	(-1.37 to -1.06)
		7535.4	85.66	1.3	-18.61	2.5	-23.4	-1.04
Secondhand smoke	Female	(964.1 to 14256)	(42.13 to 140.66)	(0.2 to 2.4)	(-37.7 to 5.5)	(0.3 to 4.8)	(-40.74 to 0.19)	(-1.26 to -0.81)
		17023.4	65.9	3	-26.46	6.4	-24.37	-1.19
	Male	(2142.5 to 32988)	(37.14 to 101.82)	(0.4 to 5.8)	(-39.21 to -10.53)	(0.8 to 12.3)	(-36.79 to -7.68)	(-1.39 to -0.98)

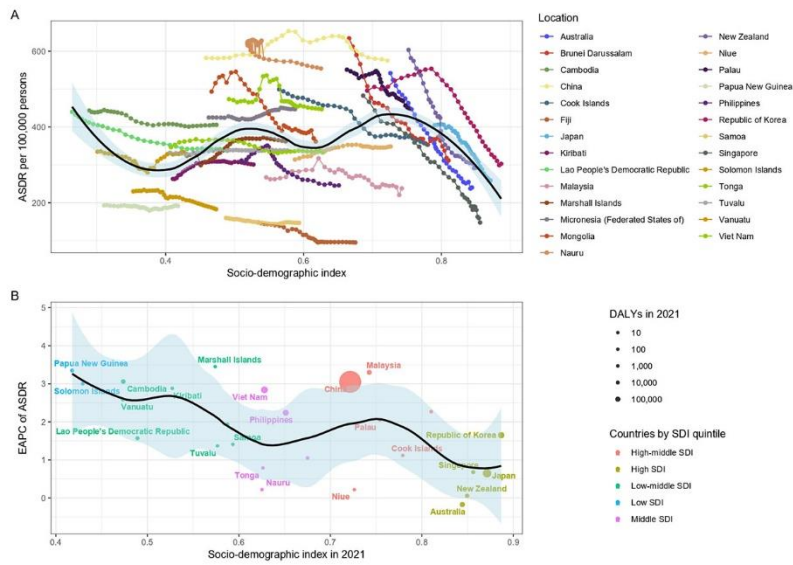
The all-age mortality is equivalent to the crude mortality rate.

a The parentheses accompanying all Global Burden of Disease health estimates represent 95% uncertainty intervals, while the parentheses for net drift indicate 95% confidence intervals.

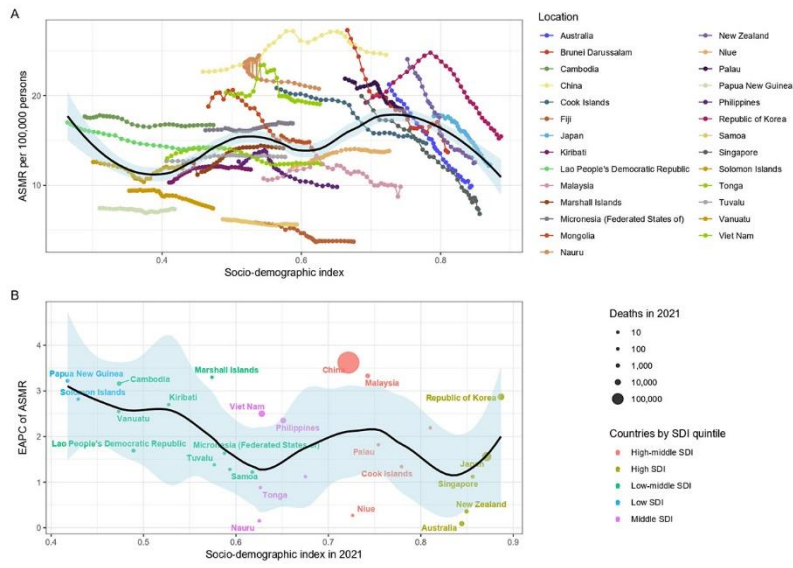
b The net drifts are estimates derived from the age–period–cohort model and signify the overall annual percentage change in mortality, encompassing the effects from calendar time and successive birth cohorts.



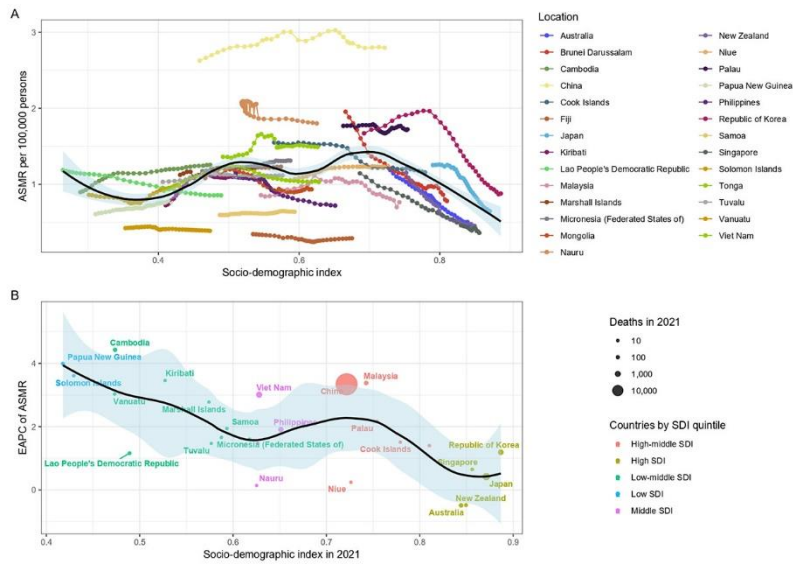
Supplementary Figure S1 Temporal trends of the numbers of DALYs, all-age DALYs, and ASDR for tobacco-related lung cancer for both sexes combined among the six WHO regions from 1990 to 2021. (A-C) Temporal trends of the numbers of DALYs, all-age DALYs rates, and ASDR for tobacco-related lung cancer from 1990 to 2021. The solid lines and shaded areas indicate the number or rate of DALYs and the corresponding 95% uncertainty intervals. (D-F) The % change of the numbers of DALYs, all-age DALYs rates, and ASDR for tobacco-related lung cancer among the six WHO regions from 1990 to 2021.



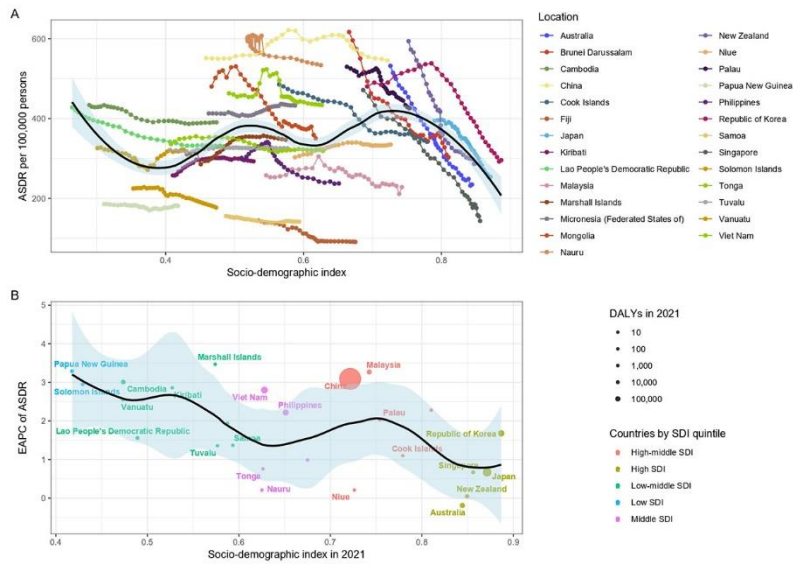
Supplementary Figure S2 The relationship between SDI levels and the age-standardized DALYs for tobacco-related lung cancer in the Western Pacific Region from 1990 to 2021
SDI: sociodemographic index.



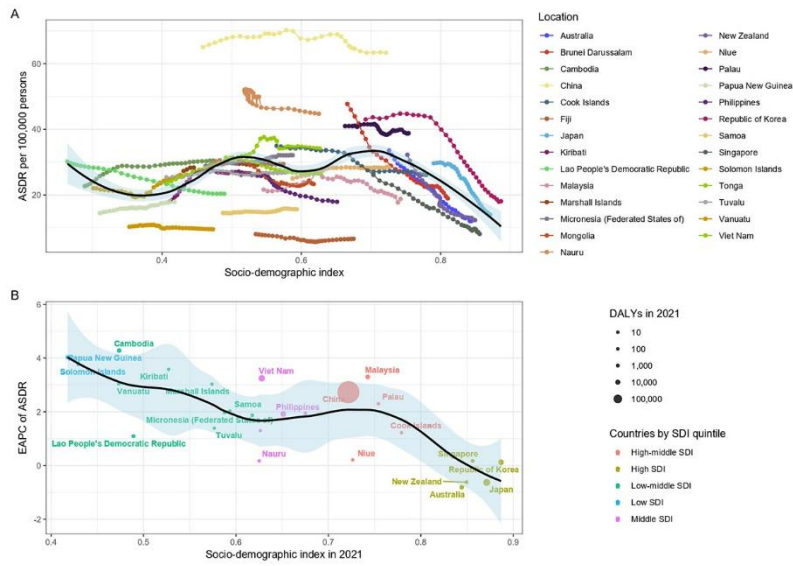
Supplementary Figure S3 The relationship between SDI levels and the age-standardized death rate for smoking-related lung cancer in the Western Pacific Region from 1990 to 2021
SDI: sociodemographic index.



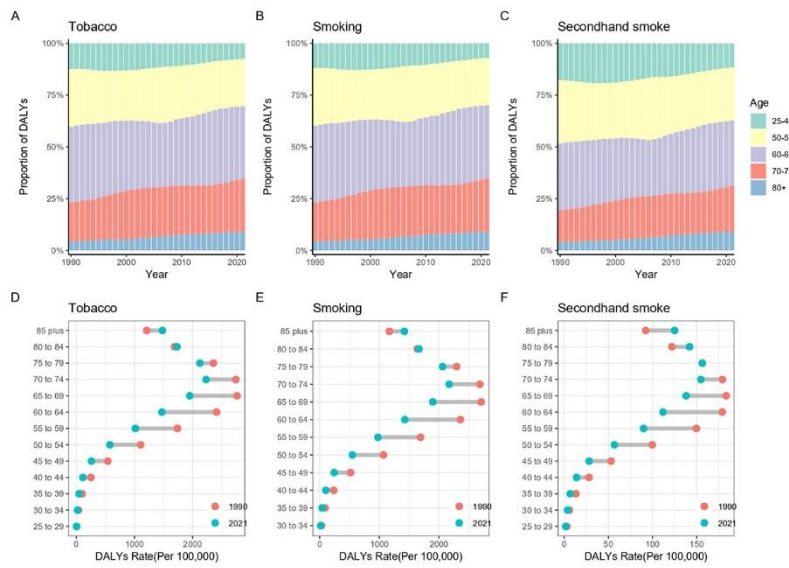
Supplementary Figure S4 The relationship between SDI levels and the age-standardized death rate for secondhand smoke-related lung cancer in the Western Pacific Region from 1990 to 2021
SDI: sociodemographic index.



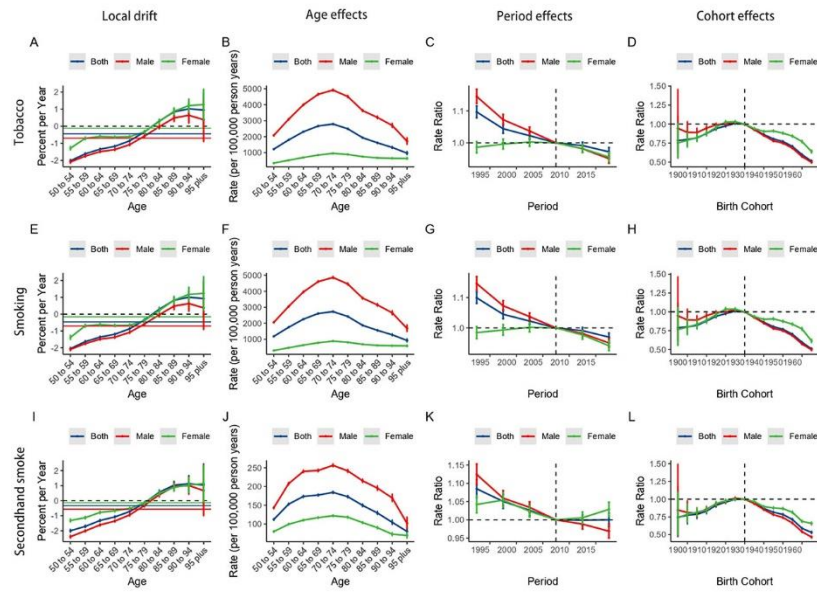
Supplementary Figure S5 The relationship between SDI levels and the age-standardized DALYs for smoking-related lung cancer in the Western Pacific Region from 1990 to 2021
SDI: sociodemographic index.



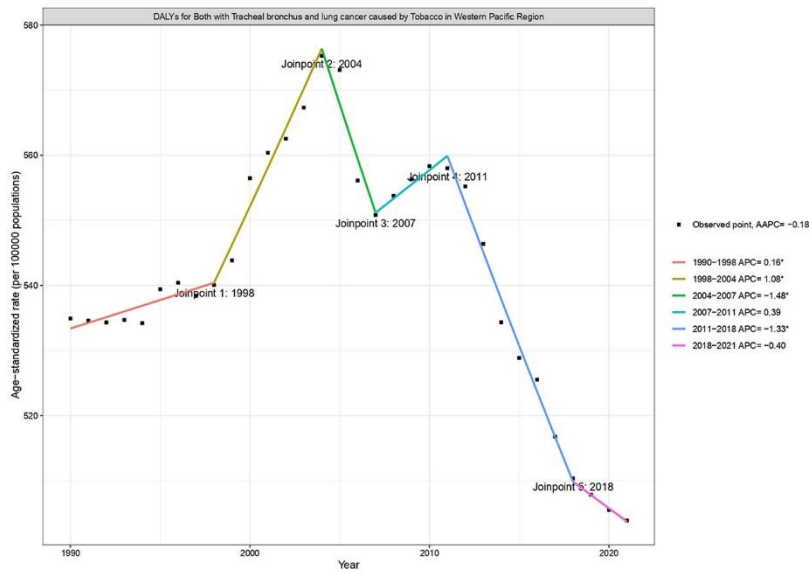
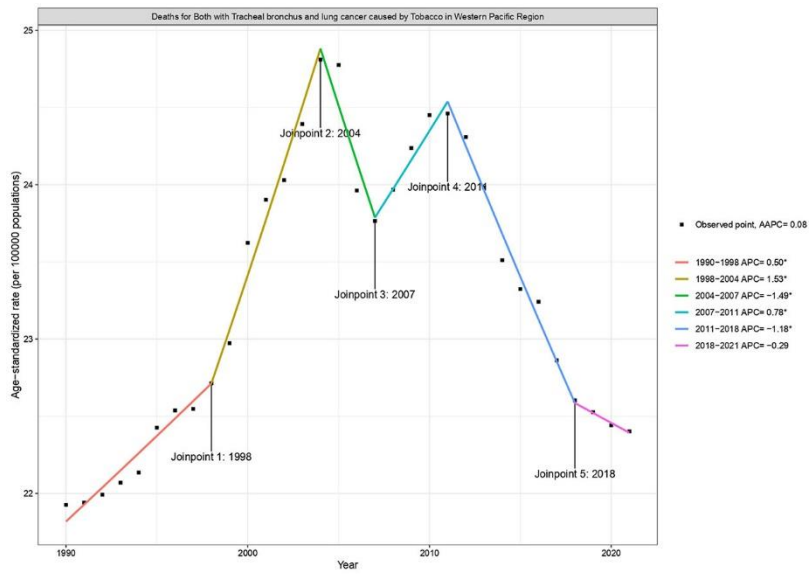
Supplementary Figure S6 The relationship between SDI levels and the age-standardized DALYs for secondhand smoke-related lung cancer in the Western Pacific Region from 1990 to 2021
SDI: sociodemographic index.



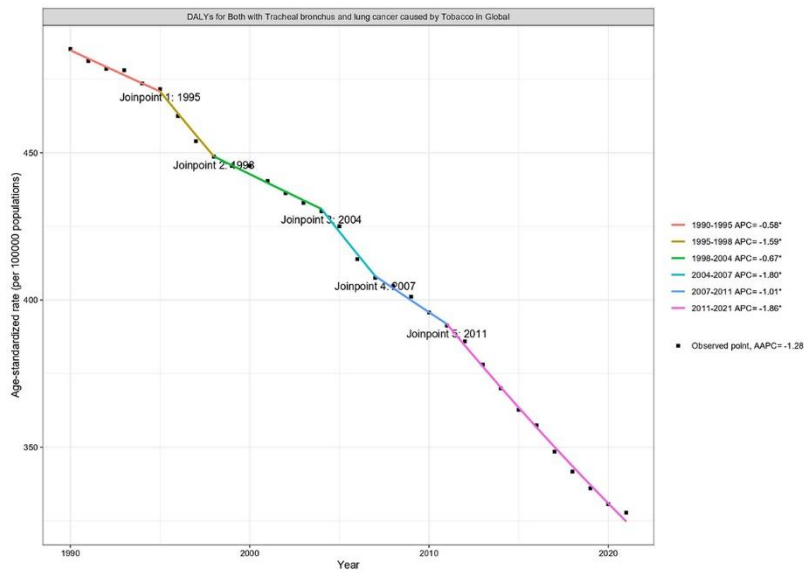
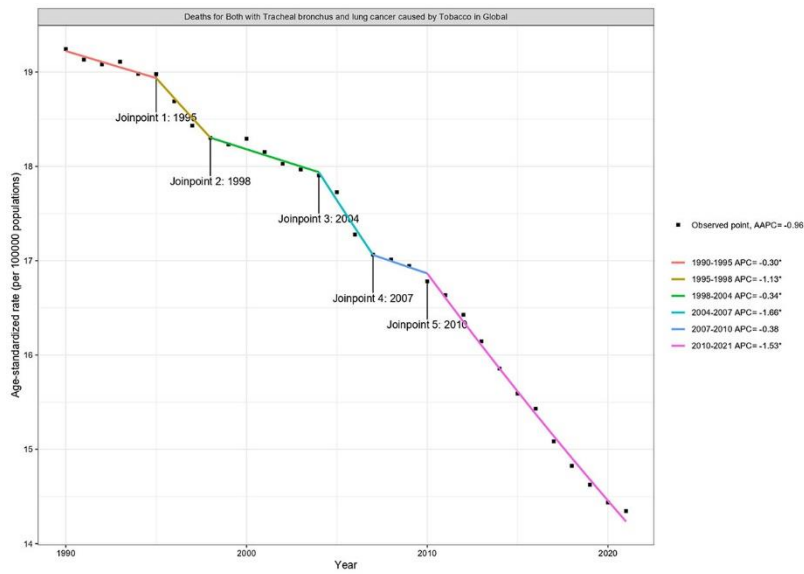
Supplementary Figure S7 The temporal change of the DALYs rate attributed to tobacco-related lung cancer across age groups in the Western Pacific Region from 1990 to 2021



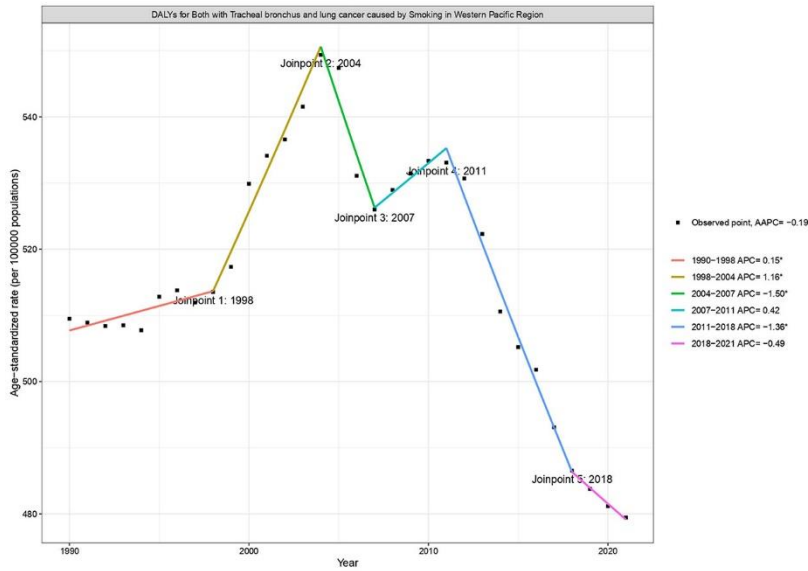
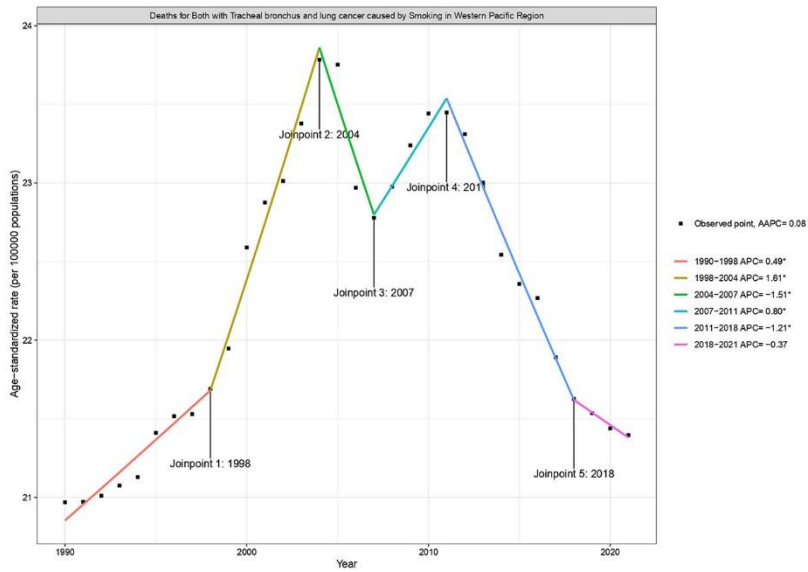
Supplementary Figure S8 The local drifts, age effects, period effects, and cohort effects of tobacco-related lung cancer related DALYs rate in the Western Pacific Region from 1990 to 2021.



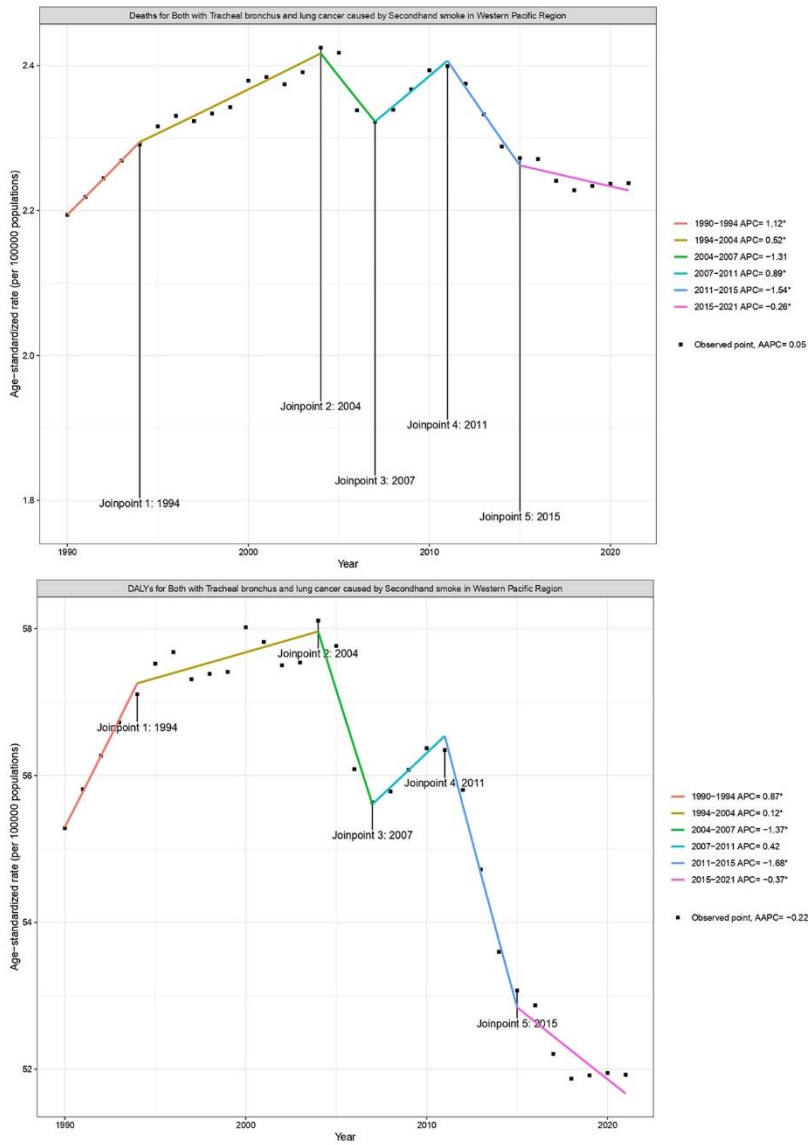
Supplementary Figure S9 The joinpoint regression analysis of the tobacco-related lung cancer burden in the Western Pacific Region from 1990 to 2021.



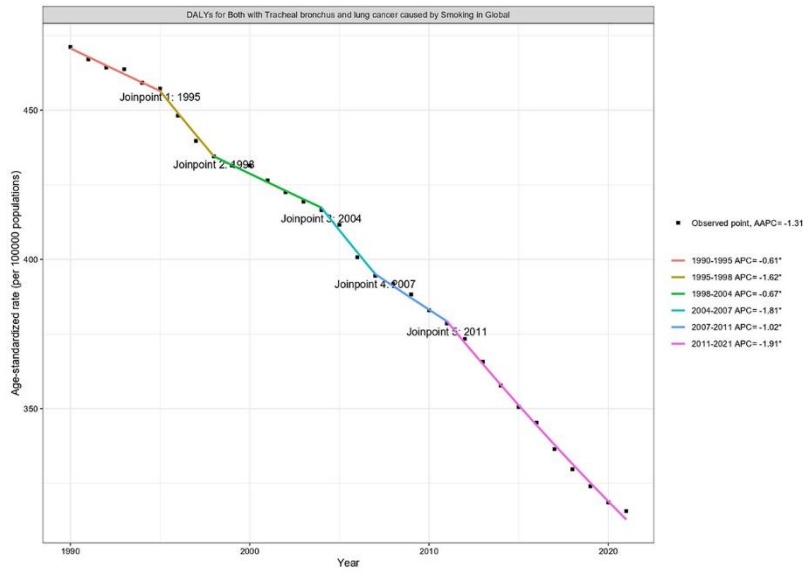
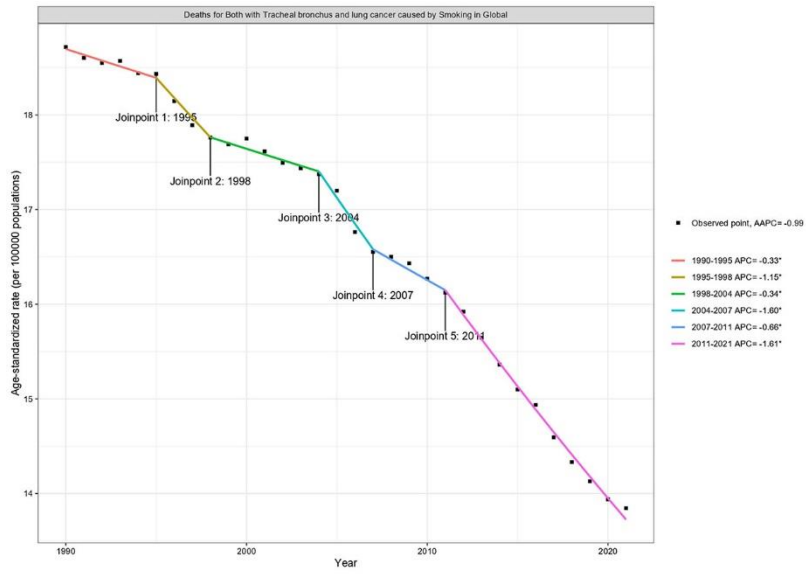
Supplementary Figure S10 The joinpoint regression analysis of the tobacco-related lung cancer burden in Global from 1990 to 2021.



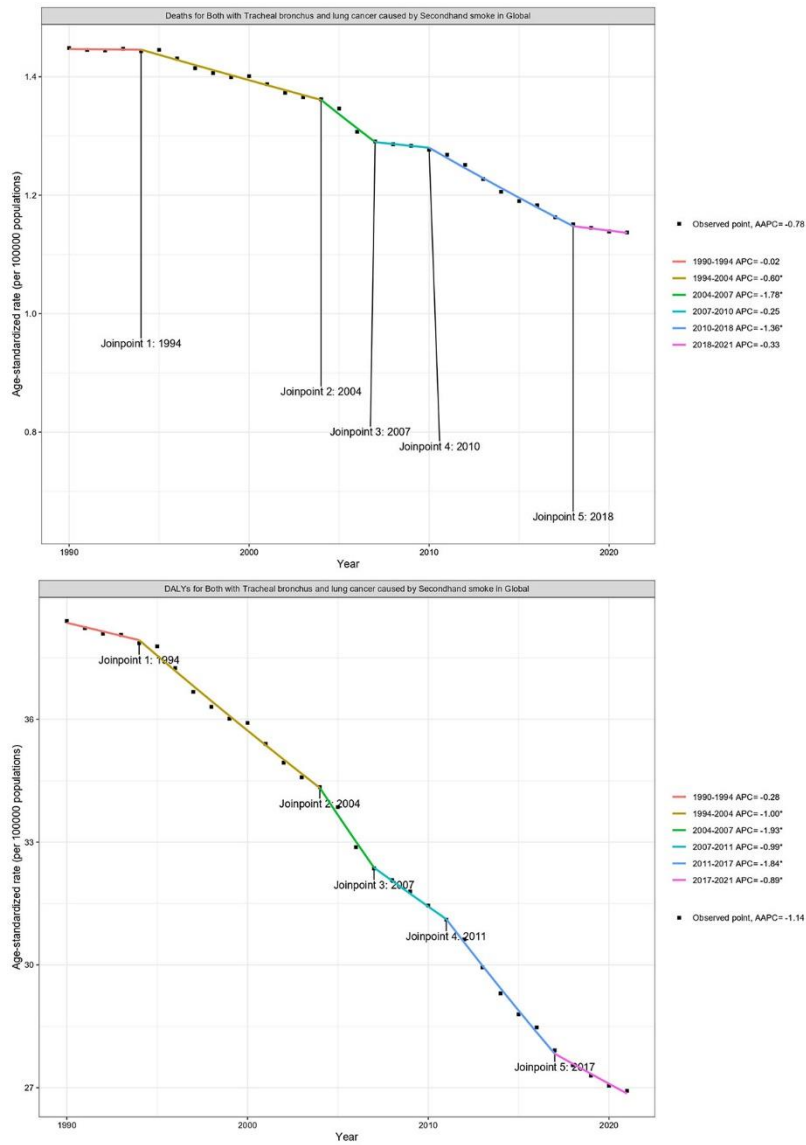
Supplementary Figure S11 The joinpoint regression analysis of the smoking-related lung cancer burden in the Western Pacific Region from 1990 to 2021.



Supplementary Figure S12 The joinpoint regression analysis of the secondhand smoke-related lung cancer burden in the Western Pacific Region from 1990 to 2021.



Supplementary Figure S13 The joinpoint regression analysis of the smoking-related lung cancer burden in Global from 1990 to 2021.



Supplementary Figure S14 The joinpoint regression analysis of the secondhand smoke-related lung cancer burden in Global from 1990 to 2021.