

## Table of Contents

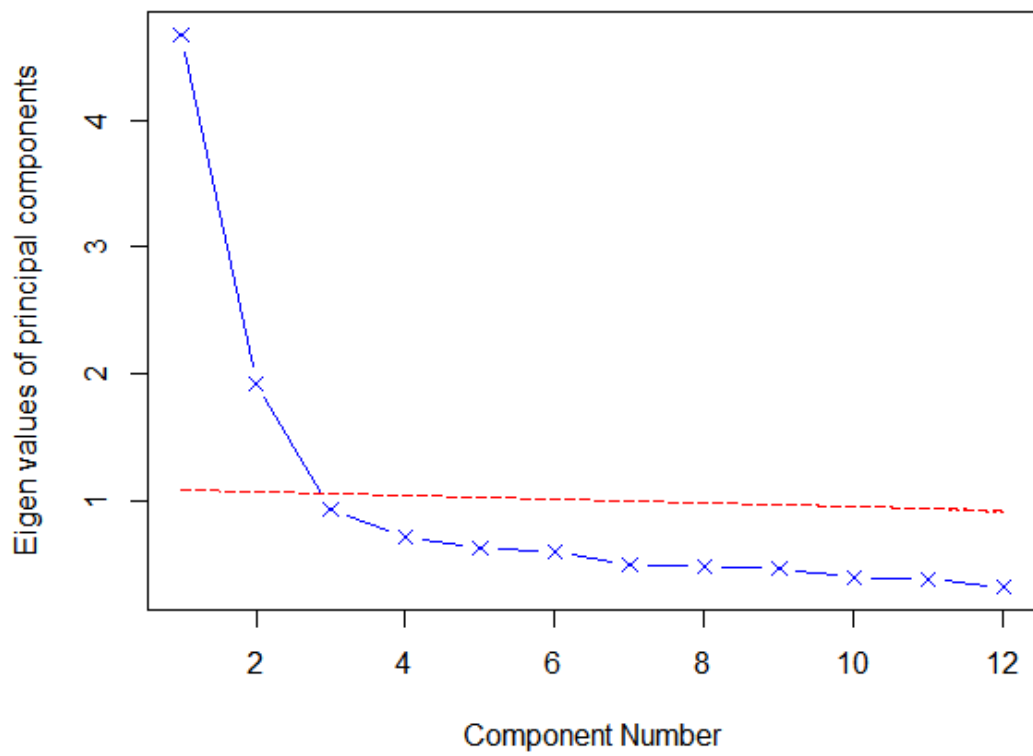
**Supplementary Figure 1. Scree plot of principal components analysis of perception regarding e-cigarette use among Chinese adults aged 18-44 years, 2023 (N=4256).**

**Supplementary Table 1. Principal component analyses – component loads, among Chinese adults aged 18-44 years, 2023 (N=4256).**

**Supplementary Figure 2. Factors associated with current e-cigarette use among Chinese adults aged 18-44 years, 2023 (N=4256).** (Age and income were included as two independent variables in the model.)

**Supplementary Figure 3. Factors associated with ever e-cigarette use among Chinese adults aged 18-44 years, 2023 (N=4256).** (Age and income were included as two independent variables in the model.)

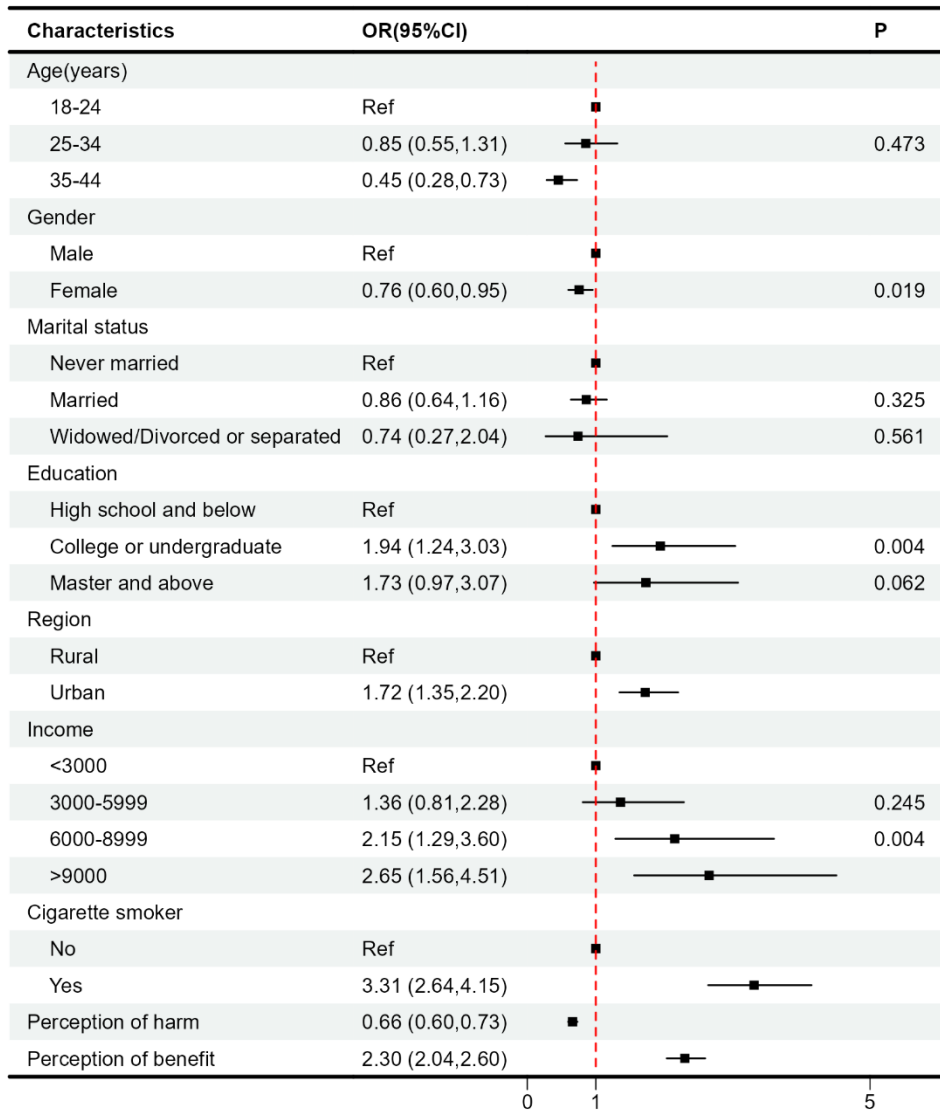
**Supplementary Figure 4. Factors associated with ever e-cigarette use among Chinese adults aged 18-44 years, 2023 (N=4256).**



**Supplementary Figure 1. Scree plot of principal components analysis of perception regarding e-cigarette use among Chinese adults aged 18-44 years, 2023 (N=4256)**

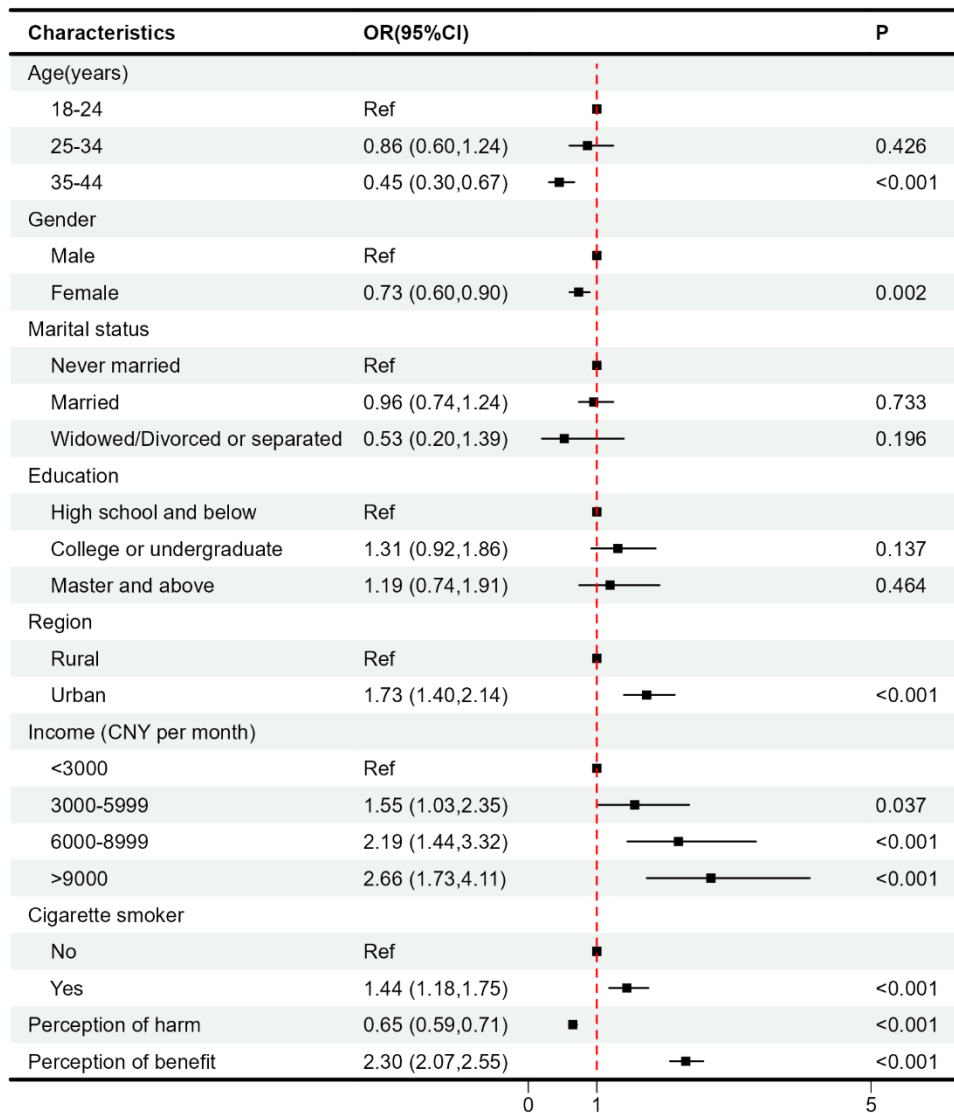
**Supplementary Table 1. Principal component analyses – component loads, among Chinese adults aged 18-44 years, 2023 (N=4256)**

<b>Variables</b>	<b>Principal component 1</b>	<b>Principal component 2</b>
	<b>Perceived harm of e-cigarettes</b>	<b>Perceived benefit of e-cigarettes</b>
Harm item1	0.73	-0.23
Harm item2	0.63	-0.03
Harm item3	0.77	-0.19
Harm item4	0.76	-0.16
Harm item5	0.76	-0.19
Harm item6	0.72	-0.19
Benefits item1	-0.05	0.76
Benefits item2	-0.08	0.79
Benefits item3	-0.16	0.77
Benefits item4	-0.18	0.72
Benefits item5	-0.26	0.59
Benefits item6	-0.18	0.62



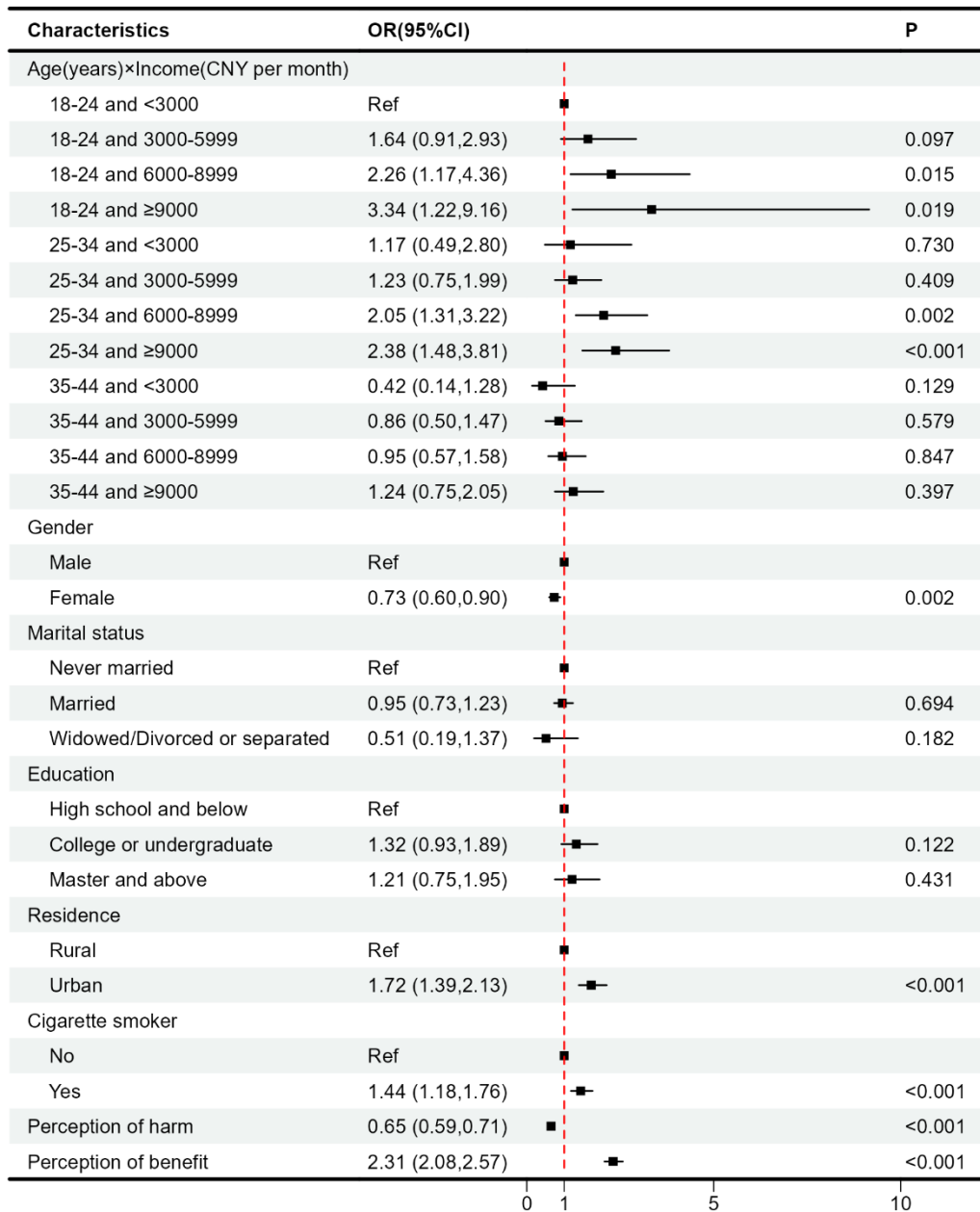
**Supplementary Figure 2. Factors associated with current e-cigarette use among Chinese adults aged 18-44 years, 2023 (N=4256)** (Age and income were included as two independent variables in the model.)

CNY, Chinese Yuan. ORs (95% CIs) were calculated using a multiple logistic regression model, adjusted for age, gender, marital status, education, urban/rural residence, income, current cigarette use status, and perceptions of using e-cigarettes.



**Supplementary Figure 3. Factors associated with ever e-cigarette use among Chinese adults aged 18-44 years, 2023 (N=4256)** (Age and income were included as two independent variables in the model.)

CNY, Chinese Yuan. ORs (95% CIs) were calculated using a multiple logistic regression model, adjusted for age, gender, marital status, education, urban/rural residence, income, current cigarette use status, and perceptions of using e-cigarettes.



**Supplementary Figure 4. Factors associated with ever e-cigarette use among Chinese adults aged 18-44 years, 2023 (N=4256)**

\*CNY, Chinese Yuan. ORs (95% CIs) were calculated using a multiple logistic regression model, adjusted for gender, marital status, education, urban/rural residence, interaction term of age and income, current cigarette use status, and perceptions of using e-cigarettes.